



VERSATILE IMAGINATIONS
Since 2003

IDEA CATALOGUE

Architectural Cor-Ten Facade



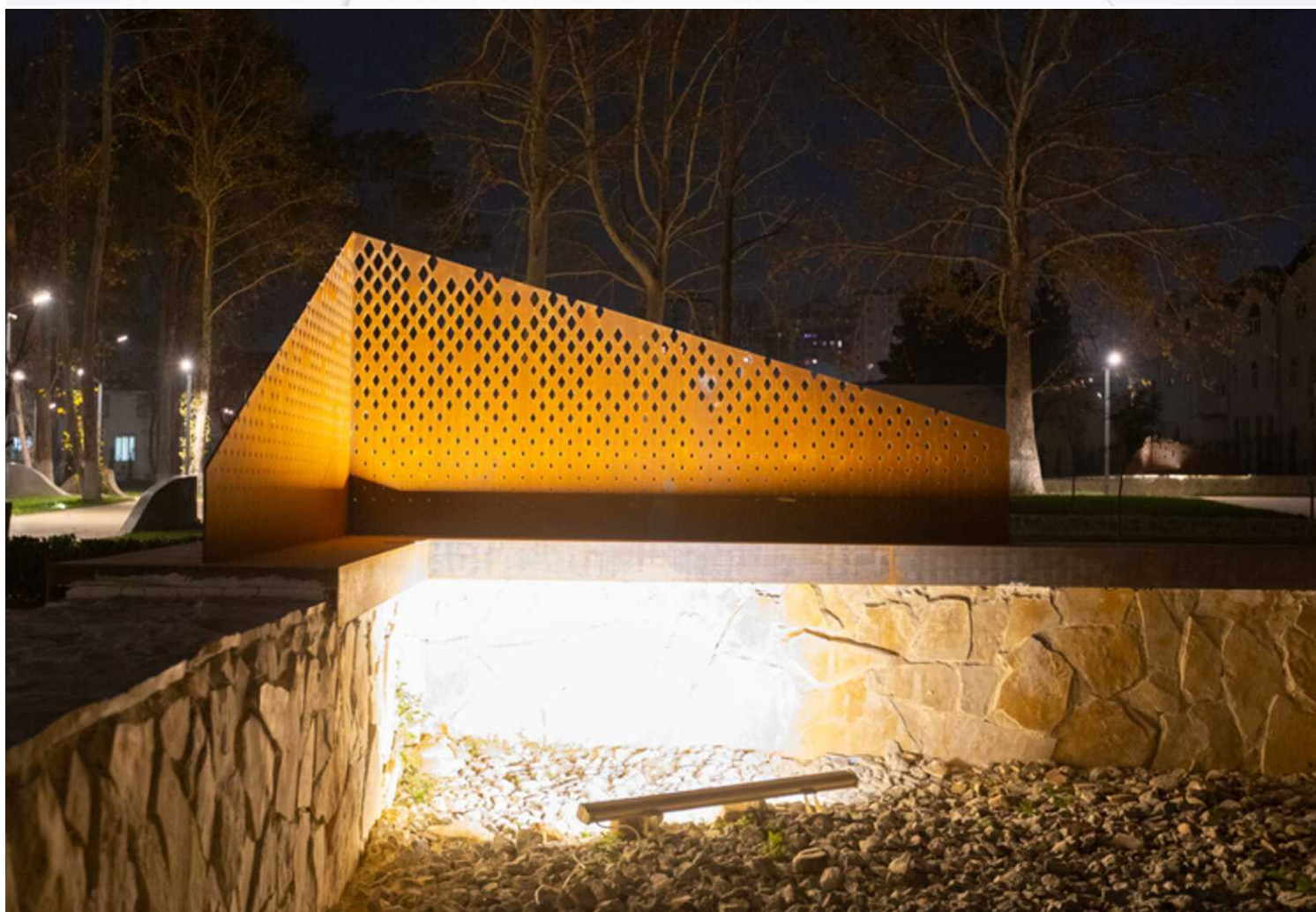
GANJA MEMORIAL COMPLEX



Ganja Memorial Complex 2025

Located in Ganja, Azerbaijan, this project features a collection of fully **custom-made corten steel elements**, forming a cohesive commemorative space. At its center stands the **Corten Memorial Wall**, constructed in an elegant arch form. Set against a white marble base, this key structure anchors the entire complex, offering a powerful visual and symbolic presence. One of the most striking elements is the **spiral-shaped corten steel planter**, extending across nearly **252 meters in length**. Carefully fabricated and installed by IDEA LLC, it guides the visitor's movement through the space while integrating naturally into the site's layout. The design also includes custom round corten benches—each with wooden seating—crafted to follow the curvature of the central spiral. Though not yet complete in the construction photos, these benches blend seamlessly into the composition. In addition, several corten "ruin" structures are positioned throughout the complex. These are not functional benches but rather sculptural forms with engraved text, offering information and reflection. The entire project—from production to installation—**was completed in just two months**, demonstrating the speed, precision, and craftsmanship of our engineering and fabrication team.



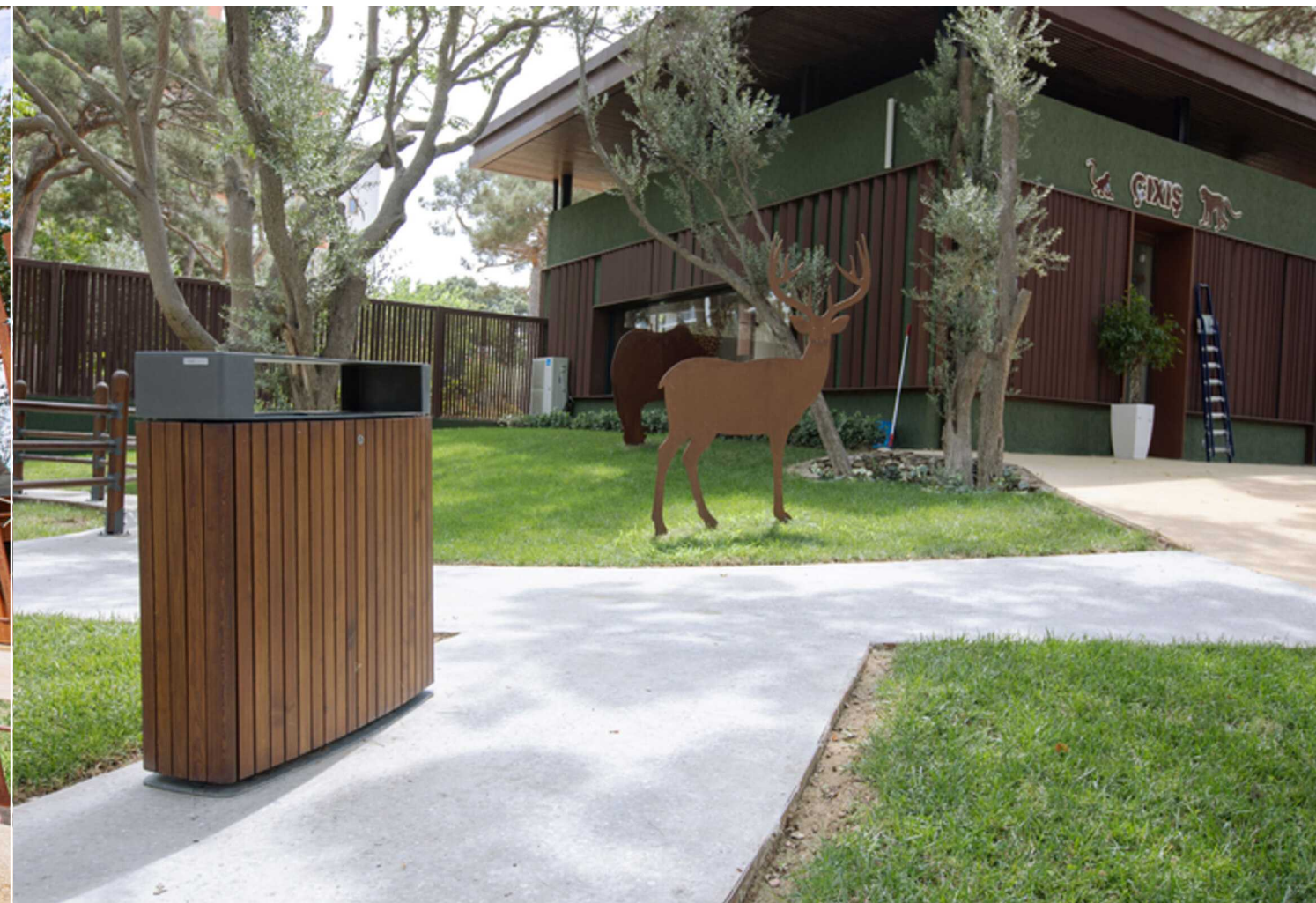




Baku Zoo Park 2021

The highlight of our contribution to Baku Zoo Park is the stunning entrance design. It features a **layered Corten steel artwork facade** with hidden passages, planters, and integrated lighting, creating a dynamic and welcoming entry. A striking wooden façade bears the Zoo Park logo, complemented by the "Baku Zooloji Parki" metal sign on an elevation with precise cutouts for large trees. These cutouts are framed with **aluminum covers** showcasing intricate connection details. The building beneath the elevation is fully clad in wood, with **decorative metal louvres** enhancing its appearance. Additional aluminum accents adorn the sides of the elevation. Throughout the park, we incorporated urban design solutions such as "Eco" recycle bins, "Maze" tree grilles with lighting, "Massive" curved benches, a "Photo Corner" crafted from Corten steel, and a **customizable route sign** for navigation. These thoughtful elements blend nature with modern design, enriching the zoo's experience.





DREAMLAND GOLF CLUB

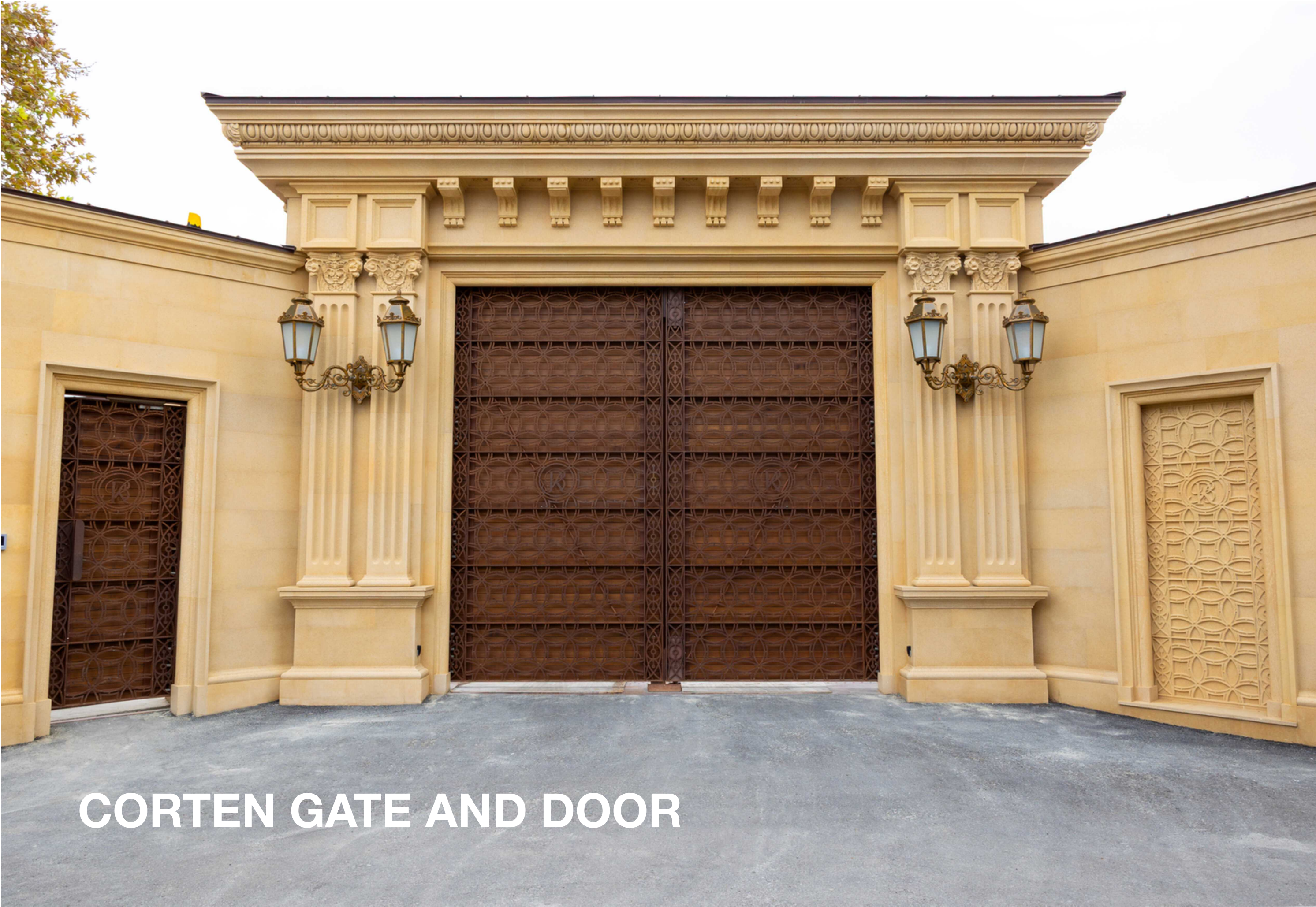


Dreamland Baku Golf Villas & Residences 2014

"Dreamland Baku Golf Villas & Residences" is renowned for its luxurious golf course and upscale living complex, attracting numerous foreign guests. The standout feature of our contribution is the striking **Corten steel artwork at the entrance**, which stretches approximately **180 meters**. This artwork reflects Azerbaijani history through intricate national ornaments and fine art, celebrating the country's rich heritage. The Corten steel, known for its "living" quality, undergoes natural oxidation and changes in hue over time, making it a dynamic element of the design. This evolving aesthetic, influenced by weather cycles and environmental factors, enhances the cultural and architectural appeal of the structure. The installation not only serves as a grand gateway but also as a tribute to the history and artistry of Azerbaijan, offering visitors a memorable first impression of this prestigious destination.

180 Meters of Azerbaijan's History in Corten Steel





CORTEN GATE AND DOOR

Corten Gate and Door

This gate system is a **fully custom**, individually engineered construction built according to the client's requirements. The structure is based on a **durable steel frame** that supports two surfaces: a **laser-cut metal front panel** with a decorative pattern and **personalized monogram**, and an **impregnated wood** backside panel treated with a **water-based EN-71 certified coating** for long-term outdoor durability. The same design logic applies to the pedestrian door positioned on the left side of the main gate.

All hinges, fixing components, and load-bearing joints were engineered and manufactured in-house to support the system's substantial weight. Prior to installation, **architectural columns with internal cavities** were produced and filled with **concrete on-site**, forming a permanent core capable of carrying a gate system of **more than two tons**.

The entire structure is powered by a **fully automated wireless opening and closing system**, ensuring smooth and stable operation despite its mass. This project combines precise engineering, custom detailing, and classical architectural elements into a cohesive, **tailor-made** entrance solution.



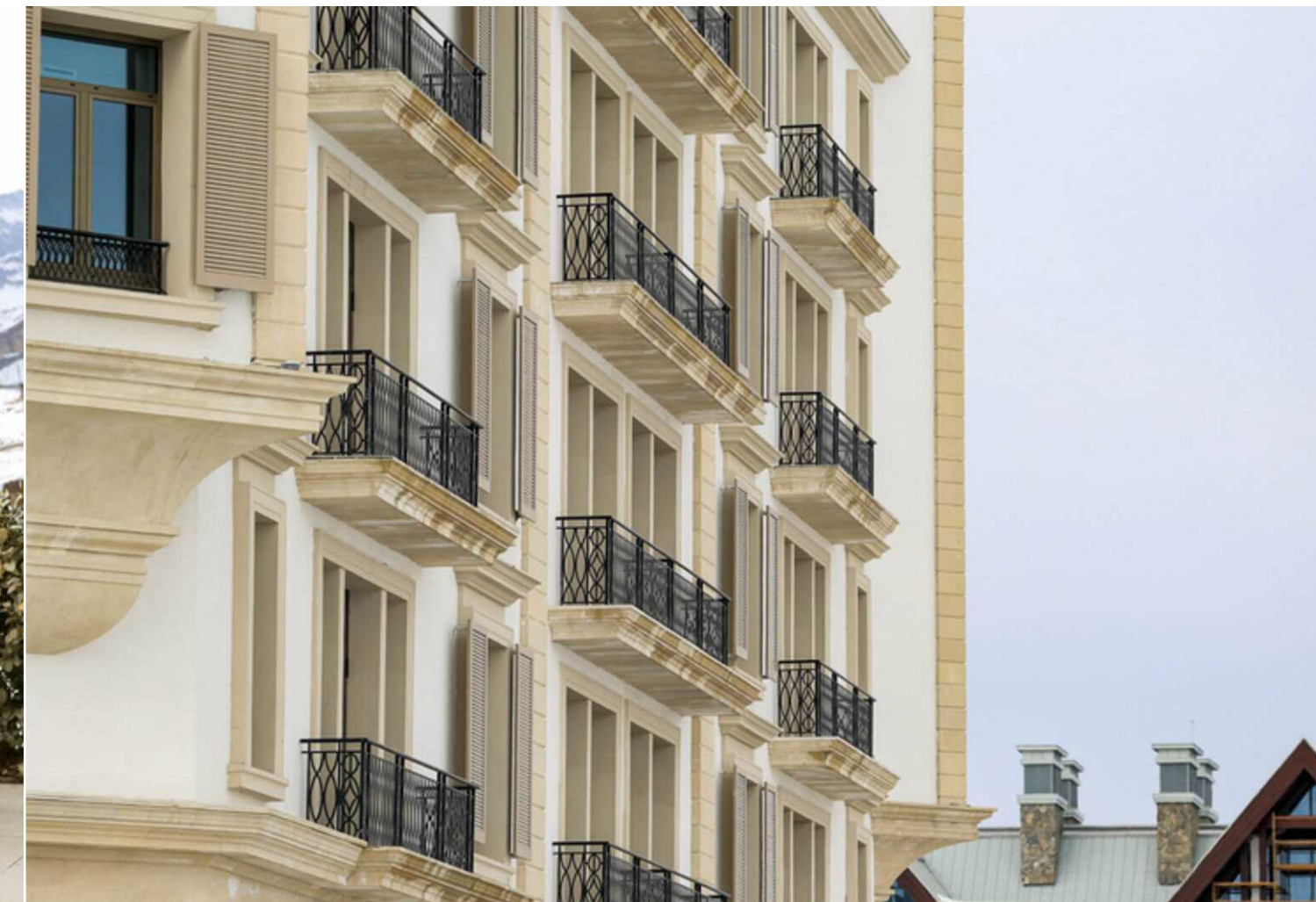
Four Seasons Hotel (Baku) 2012

Located on a waterfront promenade with breathtaking views of the Caspian Sea and Old City, the **Four Seasons Hotel Baku** represents a hallmark of luxury. For this iconic project, we contributed various high-quality decorative elements that blend elegance with functionality. These include ornamental **balcony balustrades**, intricate metal **entrance gates**, **architectural steel structures**, and **decorative steel elements** for the facade. The entrance area features meticulously crafted port cochere handrails, enhancing both safety and sophistication. Additional elements, such as lighting rods and flagpoles, further elevate the grandeur of the property. Each structure was designed to prioritize both aesthetic appeal and practical safety, aligning seamlessly with the hotel's luxurious image and ensuring an exceptional experience for its guests.





PIK PALACE HOTEL

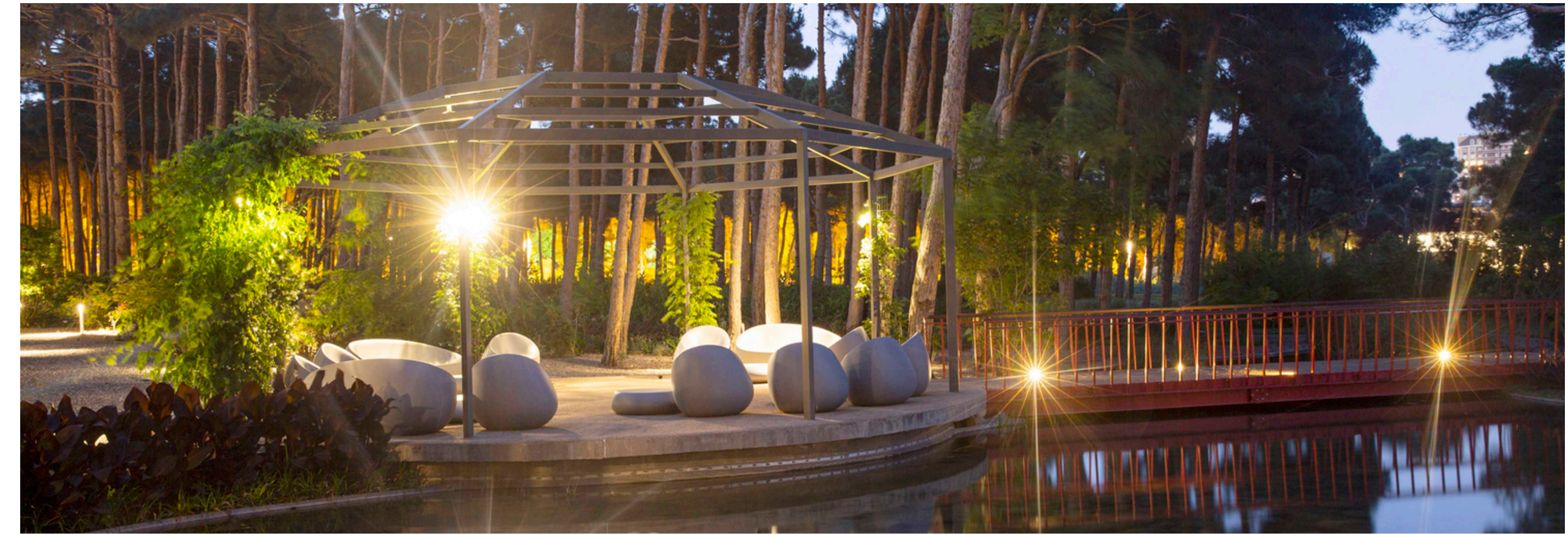


Pik Palace Hotel (Shahdag) 2012

Nestled in the mountainous Shahdag region, the **Pik Palace Hotel** is a key destination for **skiing tourism** in Azerbaijan. IDEA contributed to its exterior design, incorporating durable **architectural metalworks** such as **balcony balustrades, flagpoles, porte-cochere, and domed spires**. We also designed **wooden louvers** for the windows, providing a blend of aesthetic appeal and practicality. The hotel's exterior and landscape furniture were strategically selected to stabilize the various sections, complementing the harsh winter conditions of the Gusar area in northern Azerbaijan. To withstand these severe conditions, the metal elements were crafted for maximum outdoor resistance. The **"IDEA 300" bench** model, featuring impregnated pinewood and water-based paint by **Arch Timber Protection Ltd.**, is also part of IDEA's urban bench collection, offering both comfort and durability in this challenging environment.



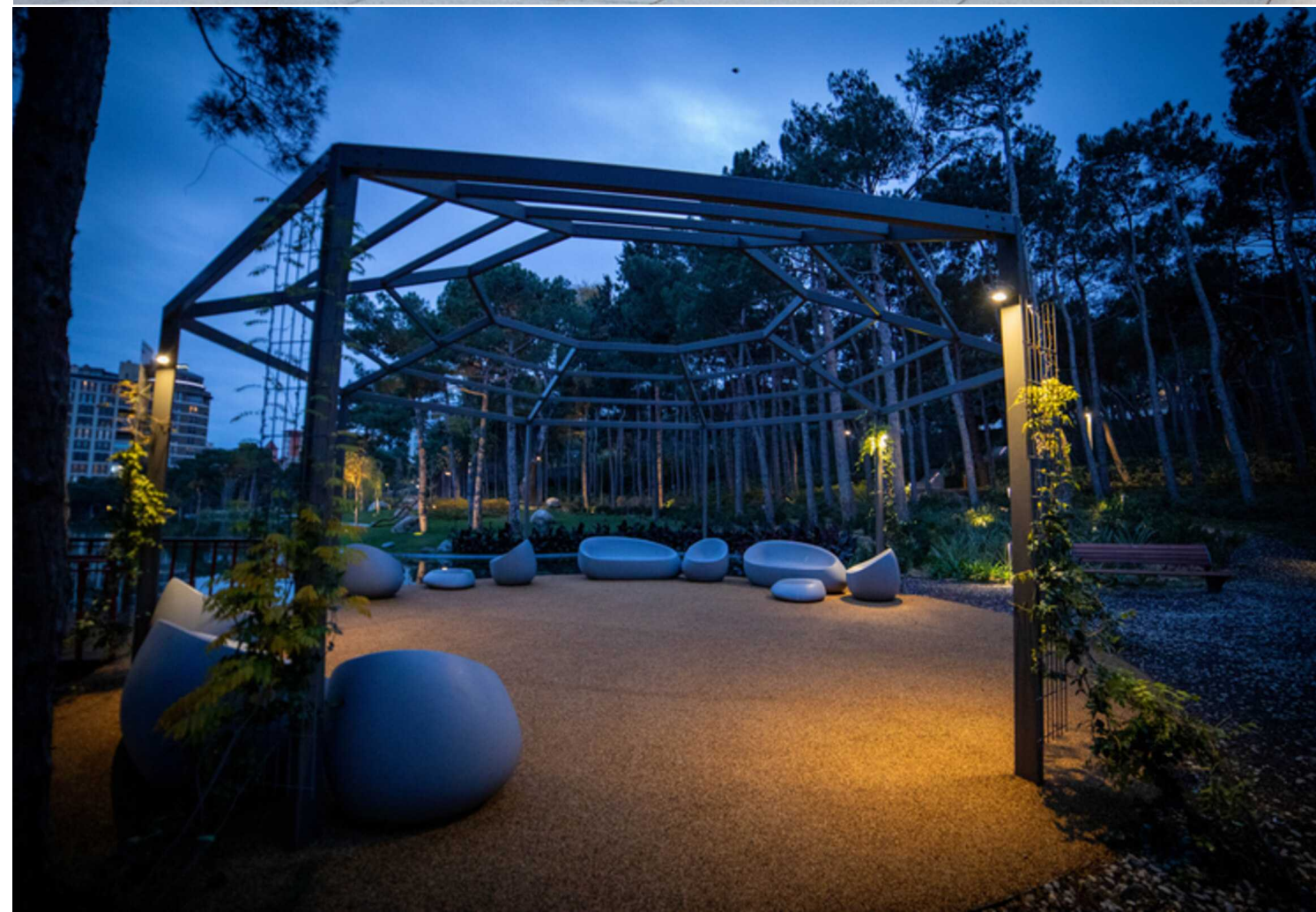
ADA UNIVERSITY



ADA University 2019

For ADA University, IDEA contributed various **architectural elements** that enhanced the campus' functionality and aesthetic. Among the key features were the **"La-Defense" pergolas**, with metal legs and **integrated lighting solutions**, and the **"Spider" pergolas**, also metallic with built-in lighting. The project further incorporated pedestrian bridges spanning the university's lake, blending utility with the surrounding natural environment. In addition to these structures, several urban furniture pieces were included: **"Murena" parametric bench**, **"PRIMO" seats** for outdoor lounging, **"CUPE" sunbeds** for relaxation, and **"Lines" tree pots** for landscaping. Functional elements such as balustrades and **"Millennium" litter bins** were also featured, contributing to the overall refinement of the university's outdoor spaces. The combination of these solutions supports ADA University's reputation for both modernity and environmental consciousness.



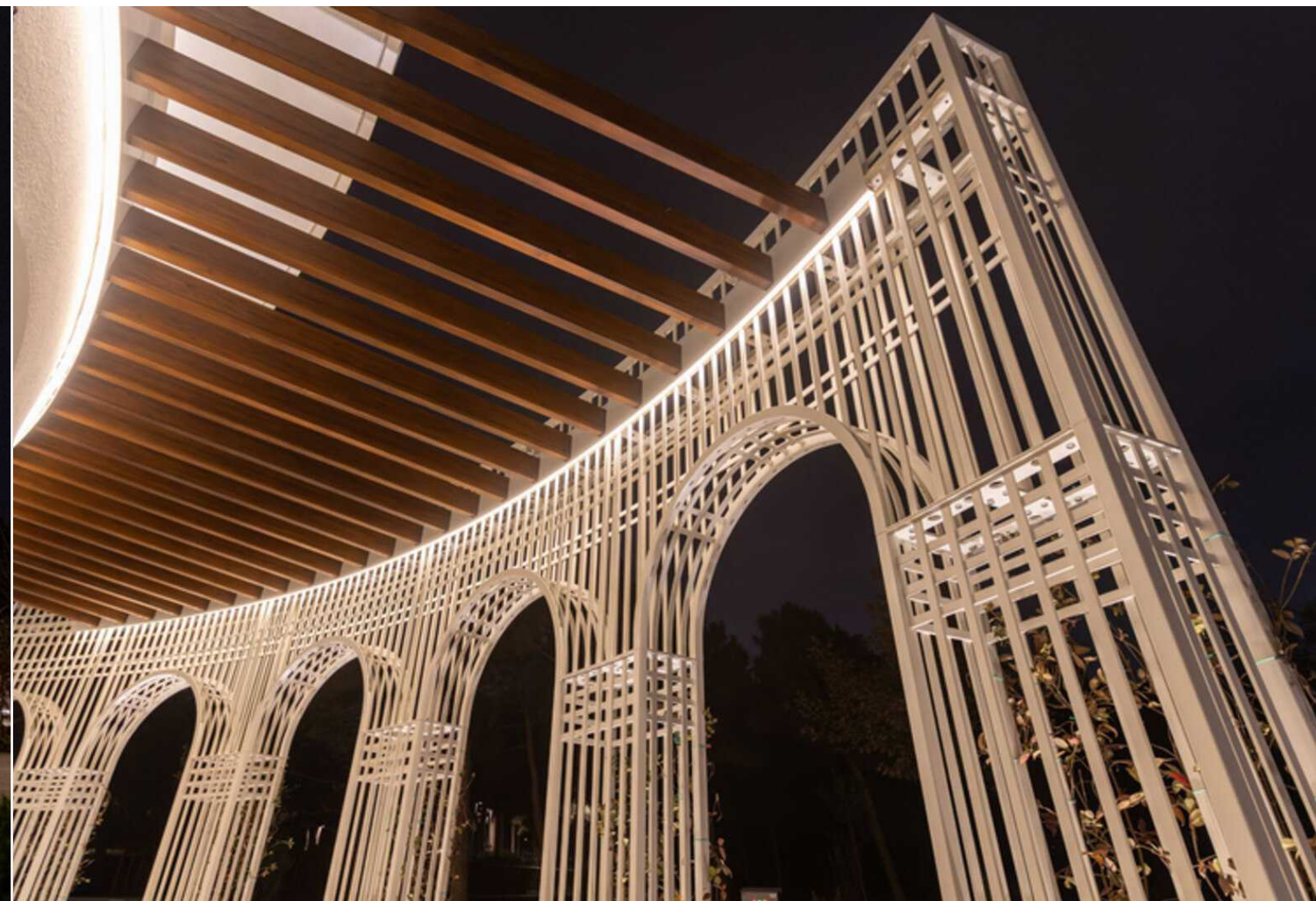


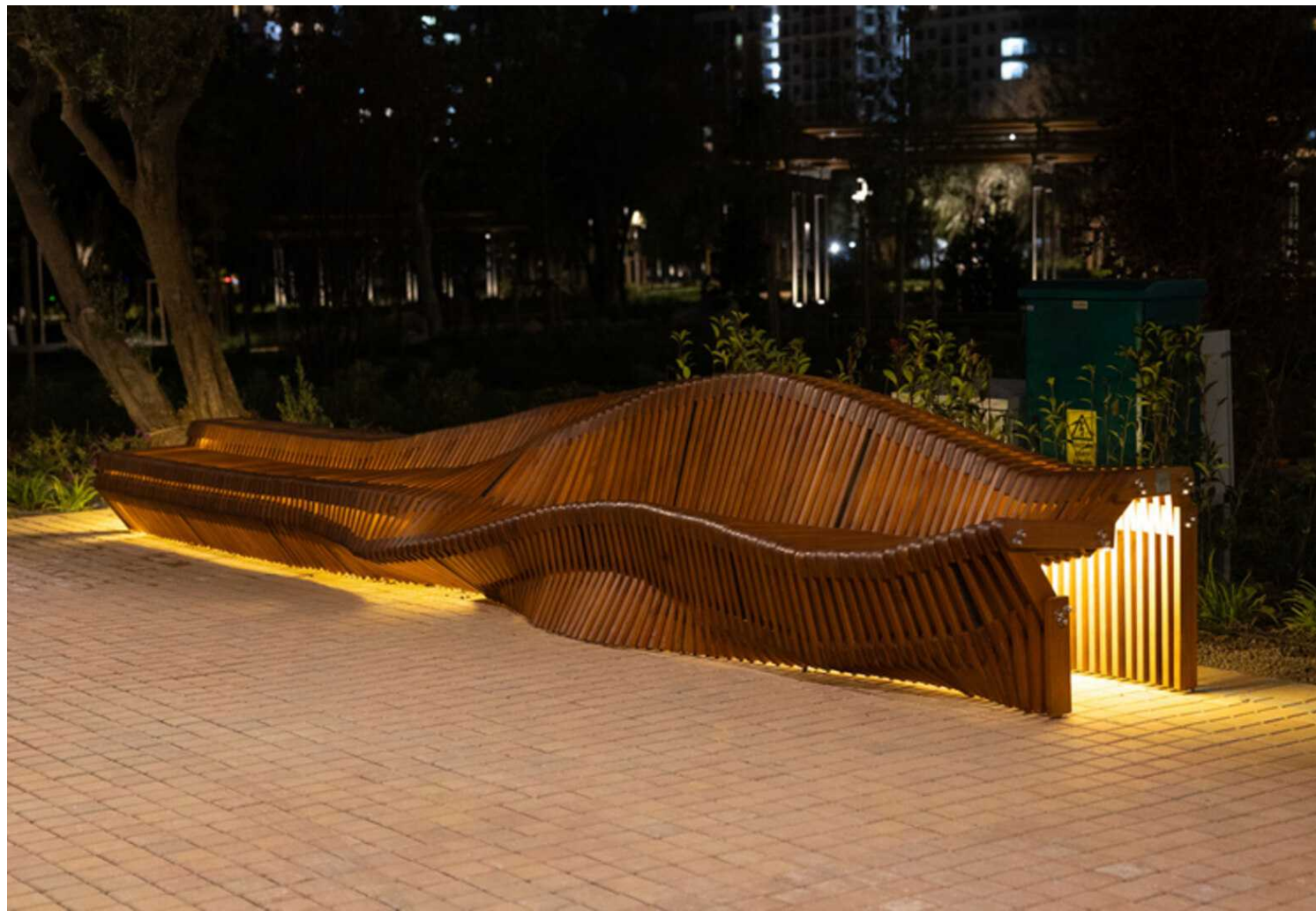


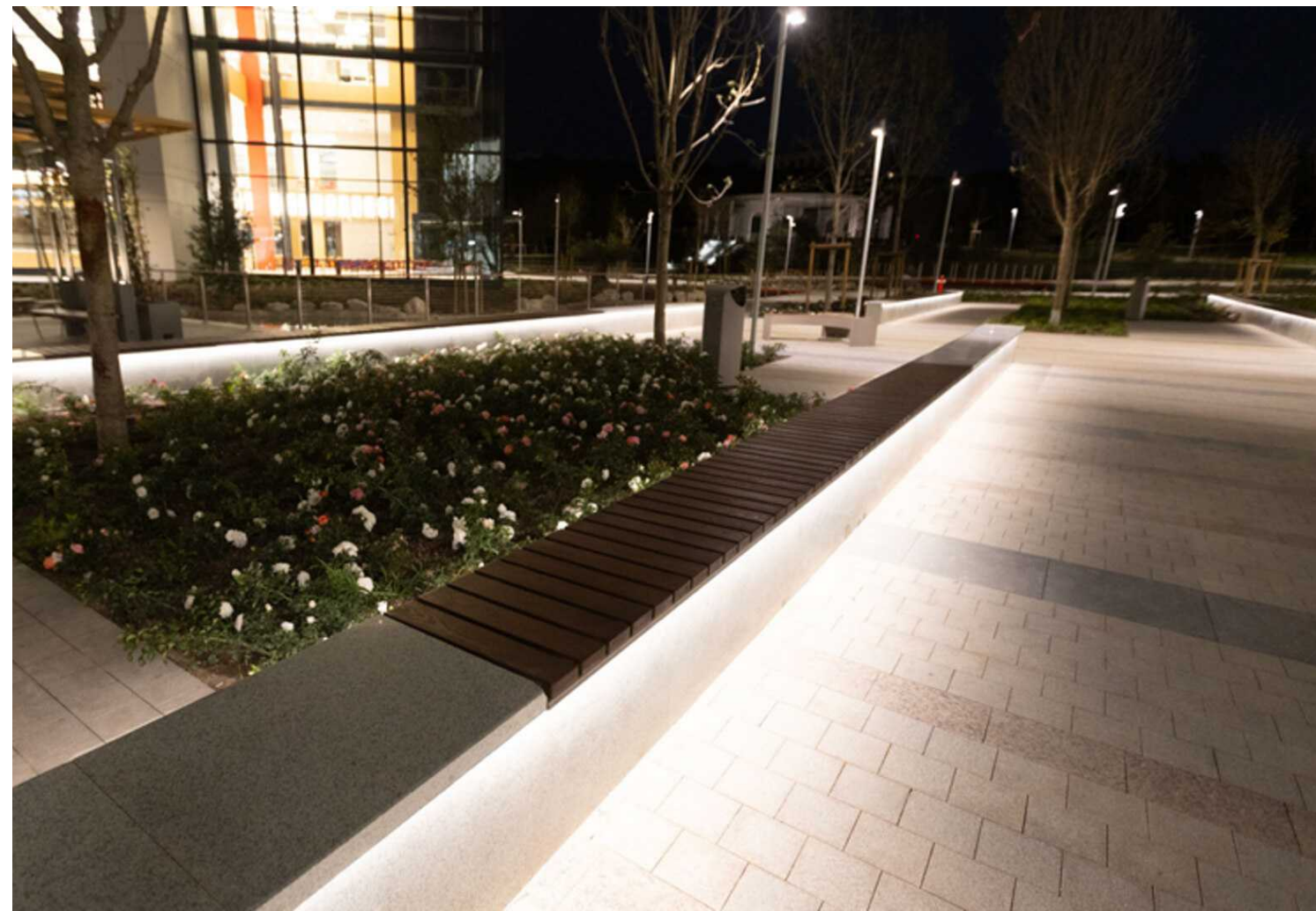
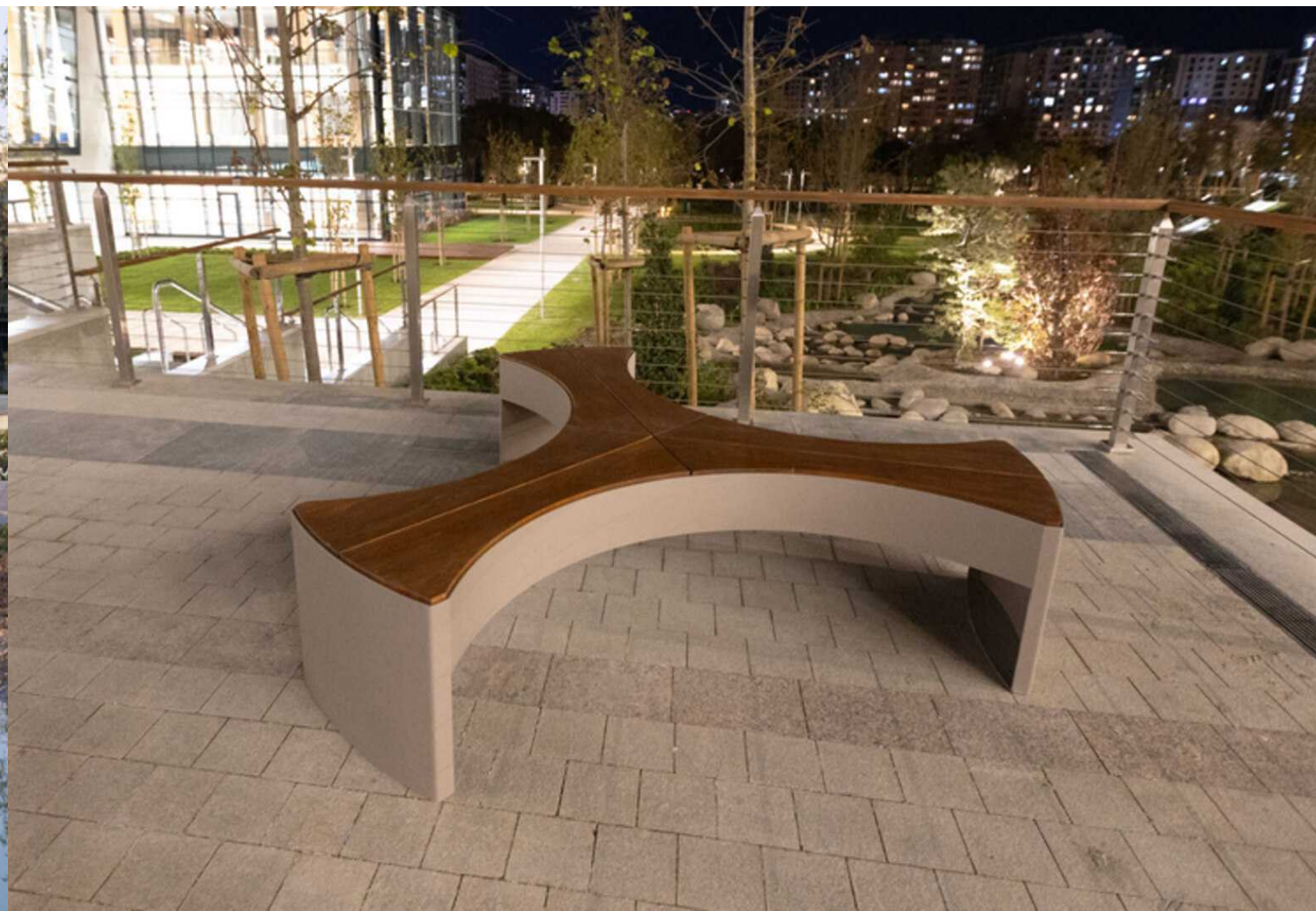
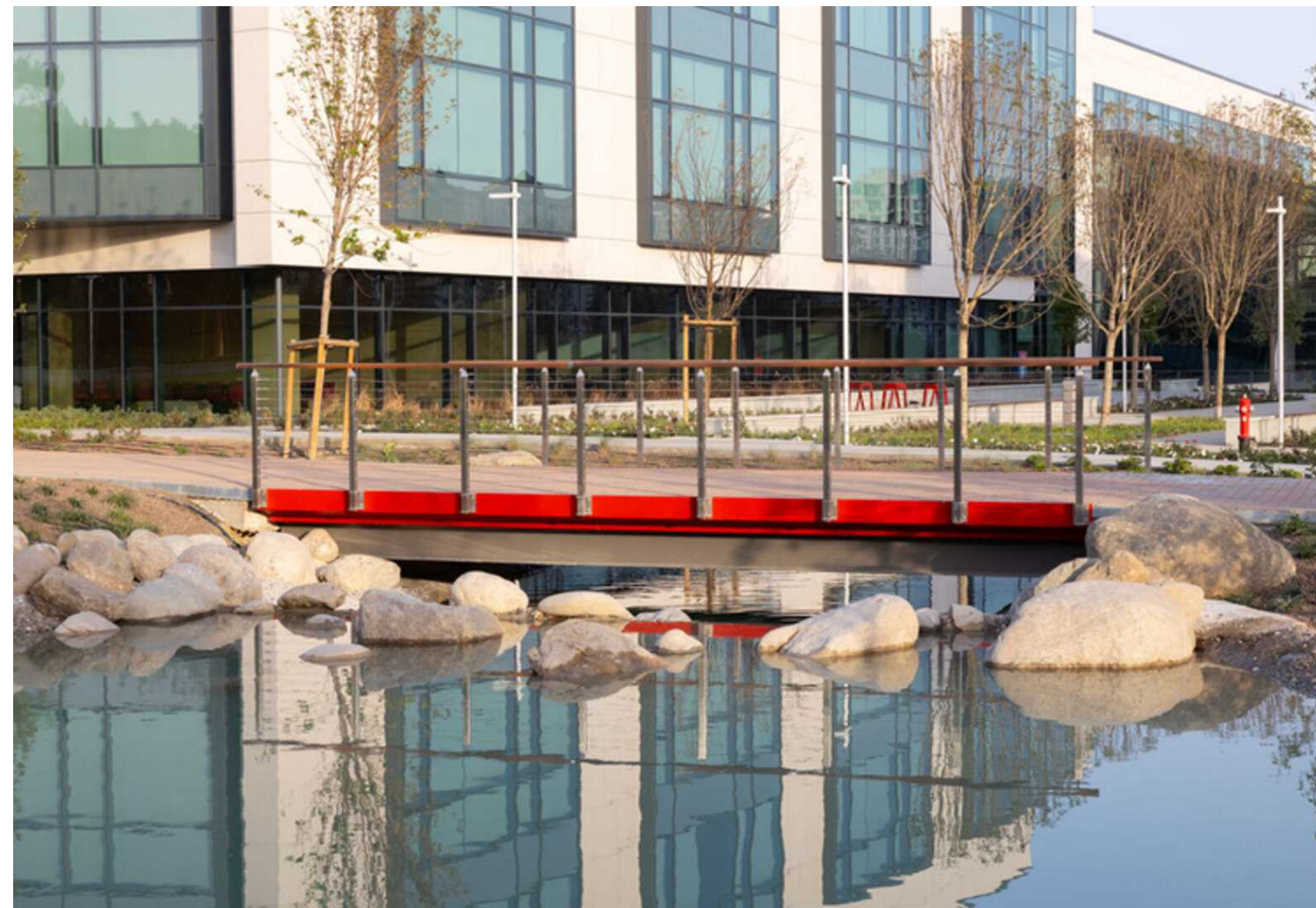
ADA University 2025

As part of ADA University's newly developed **Architecture and Design faculty** in collaboration with **Politecnico di Milano**, we are proud to have contributed several key outdoor structures. The project includes our **"Gazelli" Structure**, a large circular frame surrounding the open-air café — serving as a functional and visual centerpiece of the courtyard. We also introduced the **"La-Defense Slim" metal pergolas** — a new generation of our signature system featuring slimmer columns and integrated LED lighting. This version allows for easy access and maintenance while maintaining the elegance and durability of the original design. Additionally, we produced a series of **custom wooden benches** and **pedestrian bridges**, combining wood and metal to create clean, durable, and public-friendly solutions that blend naturally into the landscape. ADA University remains one of the country's most innovative academic institutions, and we are honored to support their growing campus with design-driven infrastructure.









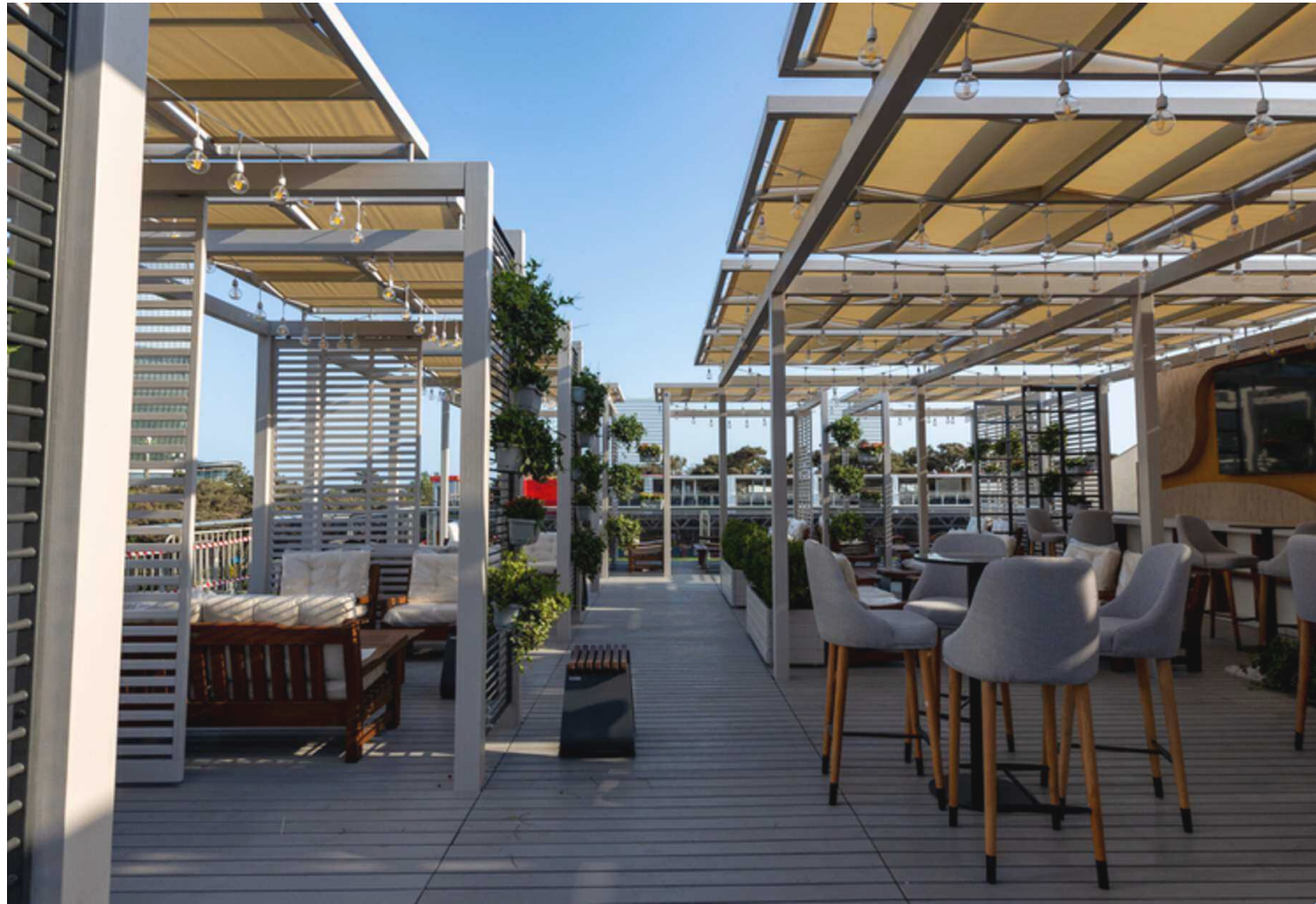


BAKU CITY CIRCUIT
Formula 1 2023

Baku City Circuit 2023 - Tenda Pergola

For the 2023 **Formula 1** event in **Baku Azerbaijan**, IDEA created the “**Tenda**” Pergola — a standout wooden structure designed to offer comfort and style within the **paddock zone**. The pergola **was installed in just one week** and **de-installed in two days**, showcasing exceptional efficiency. Featuring custom-made **galvanized metal connections** and **glue-laminated & impregnated wood** resistant to bacteria and termites, the Tenda Pergola also included integrated wooden decking — **eliminating the need for additional flooring or concrete bases**. Hidden wire passages for lighting contributed to its clean, functional design. This structure provided a luxurious, inviting atmosphere for VIPs and visitors, embodying both innovation and practicality.





Baku City Circuit 2024 - 160m² Pergola

For the 2024 **Formula 1** season in **Baku Azerbaijan**, IDEA designed and installed a larger **160-square-meter pergola within a week**. This impressive structure, made from the same high-quality **glue-laminated & impregnated wood** as its predecessor, featured wooden decking and hidden wire passages for lighting. Thanks to its **modular design** and **durable construction**, the pergola required **no heavy concrete foundations**, ensuring both speed and stability. Positioned in the paddock zone, it served as a **luxurious chill-out space** — creating a welcoming and functional environment for **VIPs and guests** during the prestigious event.





CHINAR
RESTAURANT 2024

Chinar Restaurant 2024

This pergola transformed the previously empty veranda on the first floor into a **stylish and functional space**. It consists of **five interconnected sections**, forming a cohesive structure while offering flexibility through movable dividers. These **dividers can be adjusted** to create private or open seating arrangements, catering to different guest preferences. Additionally, **custom planters** were designed and installed, adding greenery and enhancing the overall atmosphere. This project revitalized the outdoor dining area, delivering both practicality and an elevated aesthetic for restaurant visitors.

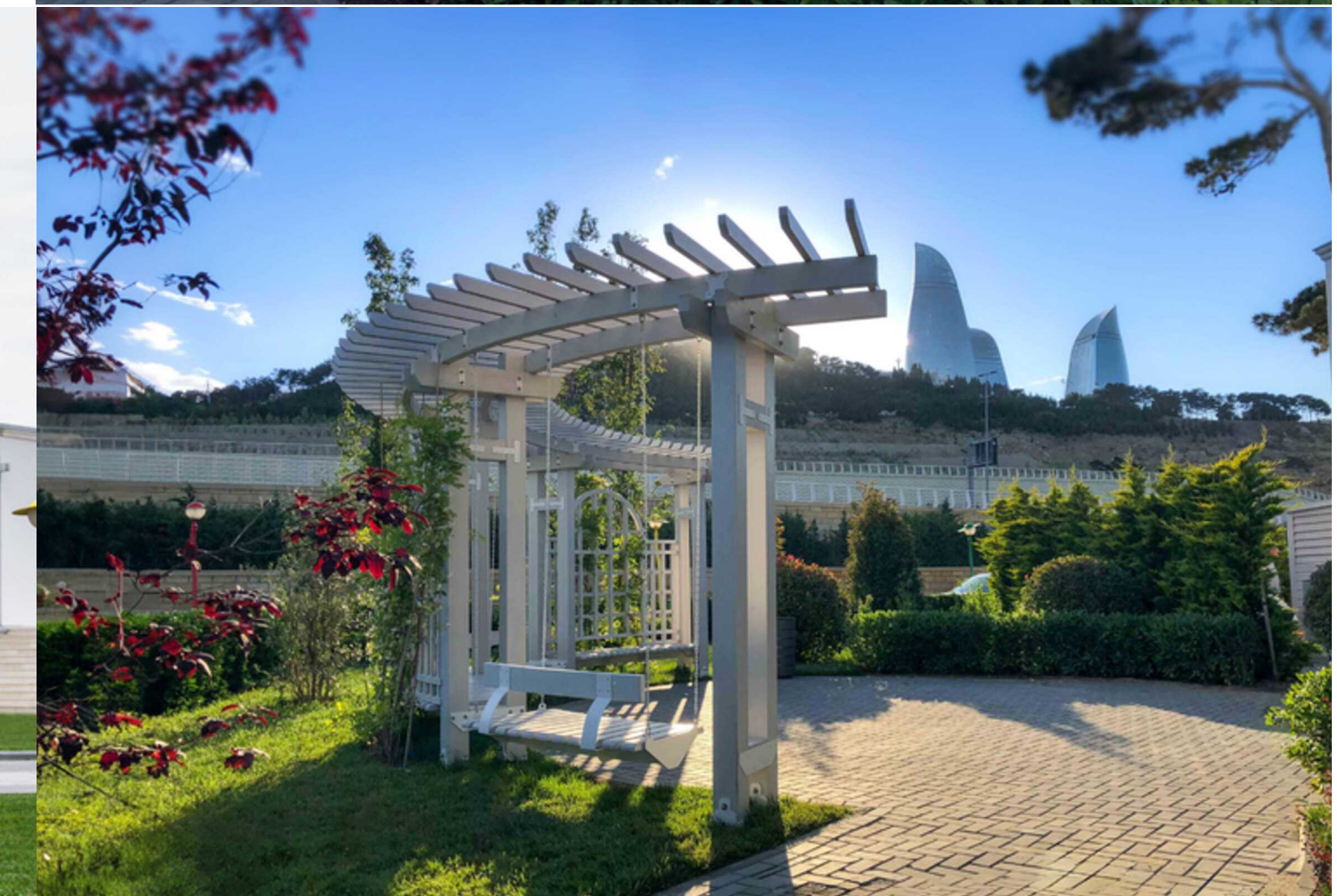


CHAYKI RESTAURANT

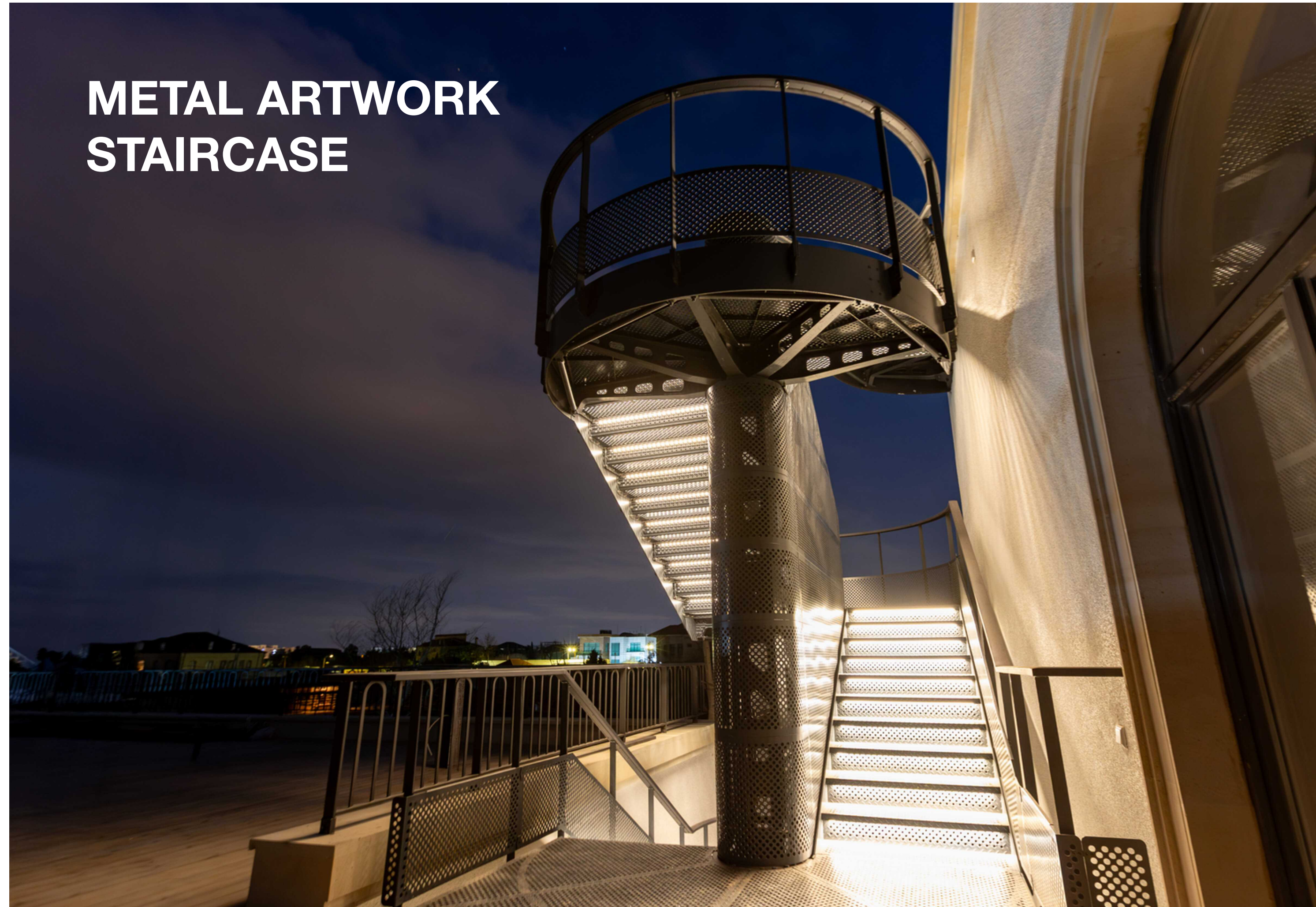


Chayki Restaurant 2018

For Chayki Restaurant, IDEA designed **three custom wooden pergolas**, each with its own distinct character. The structures were created to enhance the restaurant's **coastal ambiance**: one pergola features a **curved swing** for relaxation, another serves as a **plant-adorned entrance arbor**, and the main pergola functions as a **veranda**, offering a shaded area with added windows for a more enclosed feel. The wood was carefully selected for its **durability in a beachfront setting**, and over time, it has naturally aged, developing a more rustic and appealing aesthetic. Positioned along the **Boulevard shoreline**, the pergolas have retained their charm and resilience, blending seamlessly with the natural surroundings and providing a welcoming atmosphere for guests.



METAL ARTWORK STAIRCASE

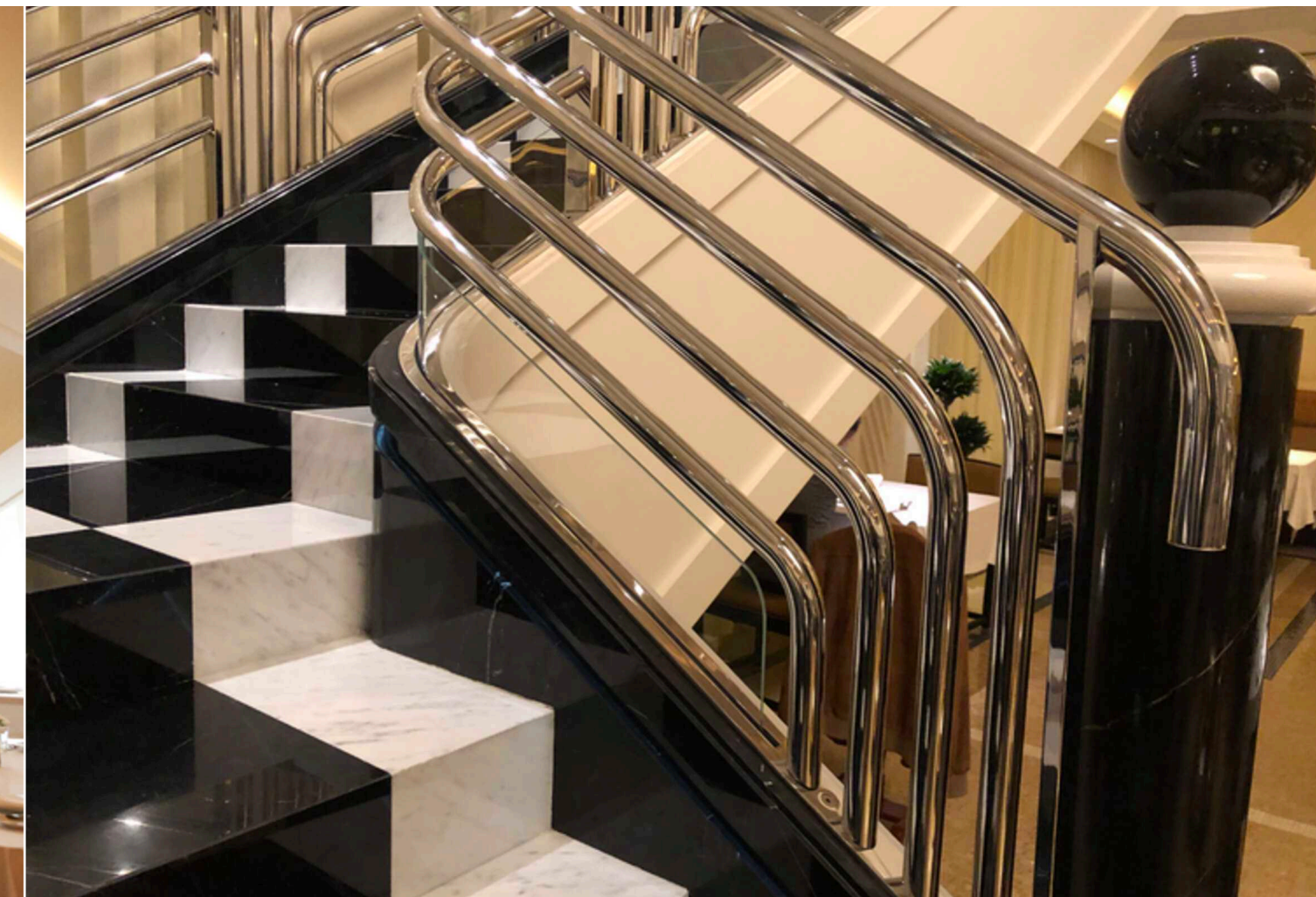
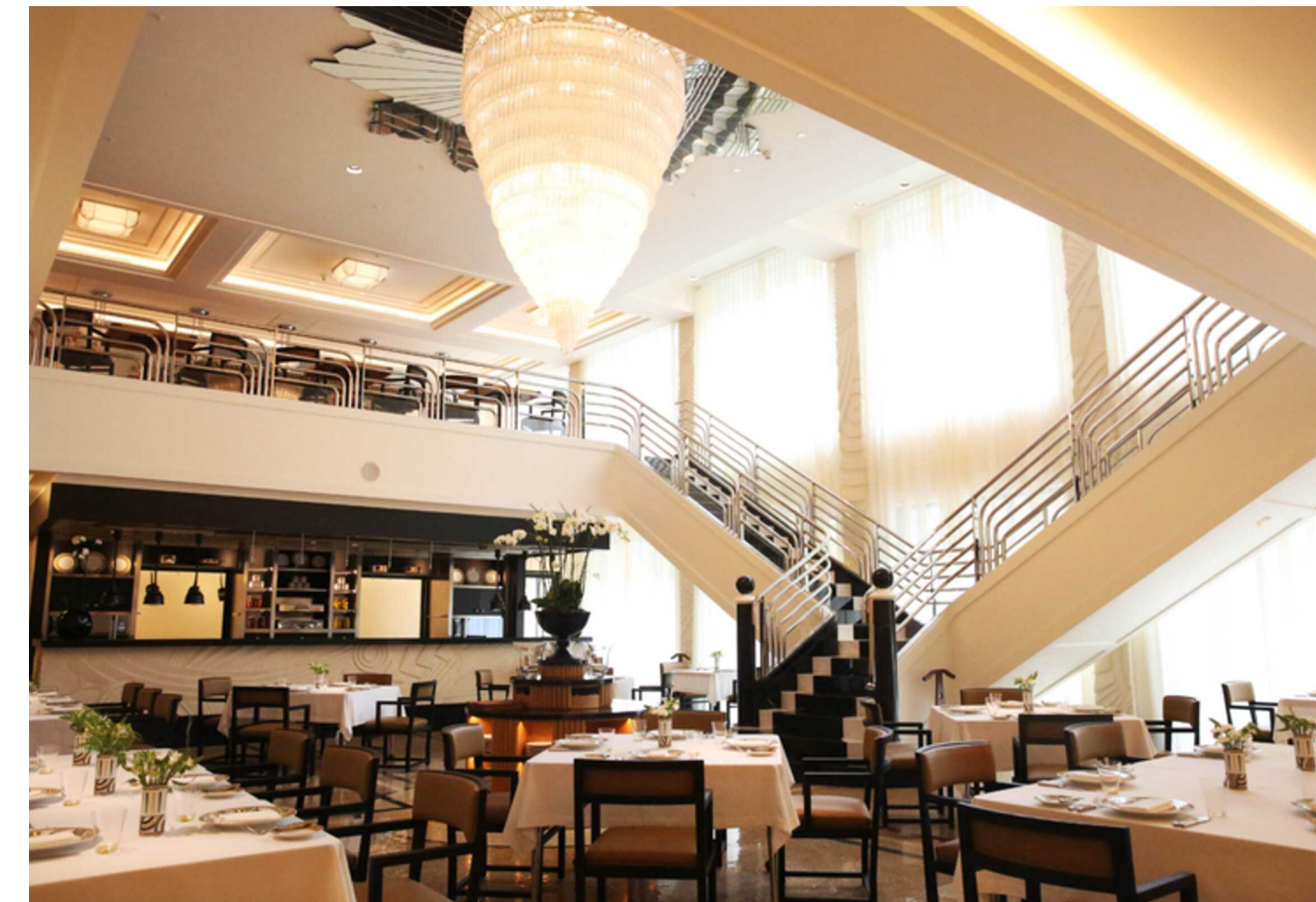


Metal Artwork Staircase

At the heart of this project stands a **fully custom, three-story spiral staircase** — a striking **metal structure** that connects the garden level to the rooftop in one continuous architectural flow. Its sculptural form winds through four circular landings, and the entire structure — from steps to railings — is perforated, offering both a lightweight appearance and secure grip. **Hidden lighting** enhances its visibility and elegance at night. Every metal component — from the staircase frame to the smallest bracket — is **galvanized and powder-coated**, ensuring long-term durability and full protection against the elements. **No maintenance is required.** Surrounding the structure, we installed over **350 meters of custom handrails** with removable **wood-look tops** and integrated lighting, providing both comfort and a cohesive aesthetic. Additionally, we crafted **balcony railings** in circular and square forms, all mounted on custom frames pre-installed during the building's construction. The result is a fully integrated architectural system — visually seamless, technically precise, and **100% crafted in-house.**







Dinamo Hote 2018

The most elegant and luxurious section of **Dinamo Hotel** — including the Main Restaurant Staircase, Main Guest Stairs, and Skylight — was designed by **Alberto Pinto Studio** and **brought to life by IDEA**. What makes this project unique is the use of **four different barrier radii**, all crafted from **stainless steel** and assembled using **bolted joints**. This refined metalwork enhances the grandeur of the space while preserving the building's sense of openness and architectural flow.





Baku Business Center Entrance Facade - White City

Stainless steel entrance facade with angled triangular detailing for White City Business Center. This **custom architectural stainless steel facade** was designed and installed for the entrance of the **Baku White City Business Center**. Inspired by the Moody's building in New York, the system consists of modular **triangular stainless steel elements** mounted on a concealed structural frame. The material used is **high-grade stainless steel 316**. The facade's standout feature lies in two diagonal zones where the triangular modules are installed at a **5-degree angle**, creating a subtle yet dynamic visual rhythm. All elements are hinged to a pre-installed **galvanized frame**, allowing for **fast installation, precise alignment**, and a **clean, seamless finish**. This **architectural facade solution** combines **minimalist metal design, angled detailing**, and **custom stainless steel cladding** to enhance the identity and elegance of the business center entrance.

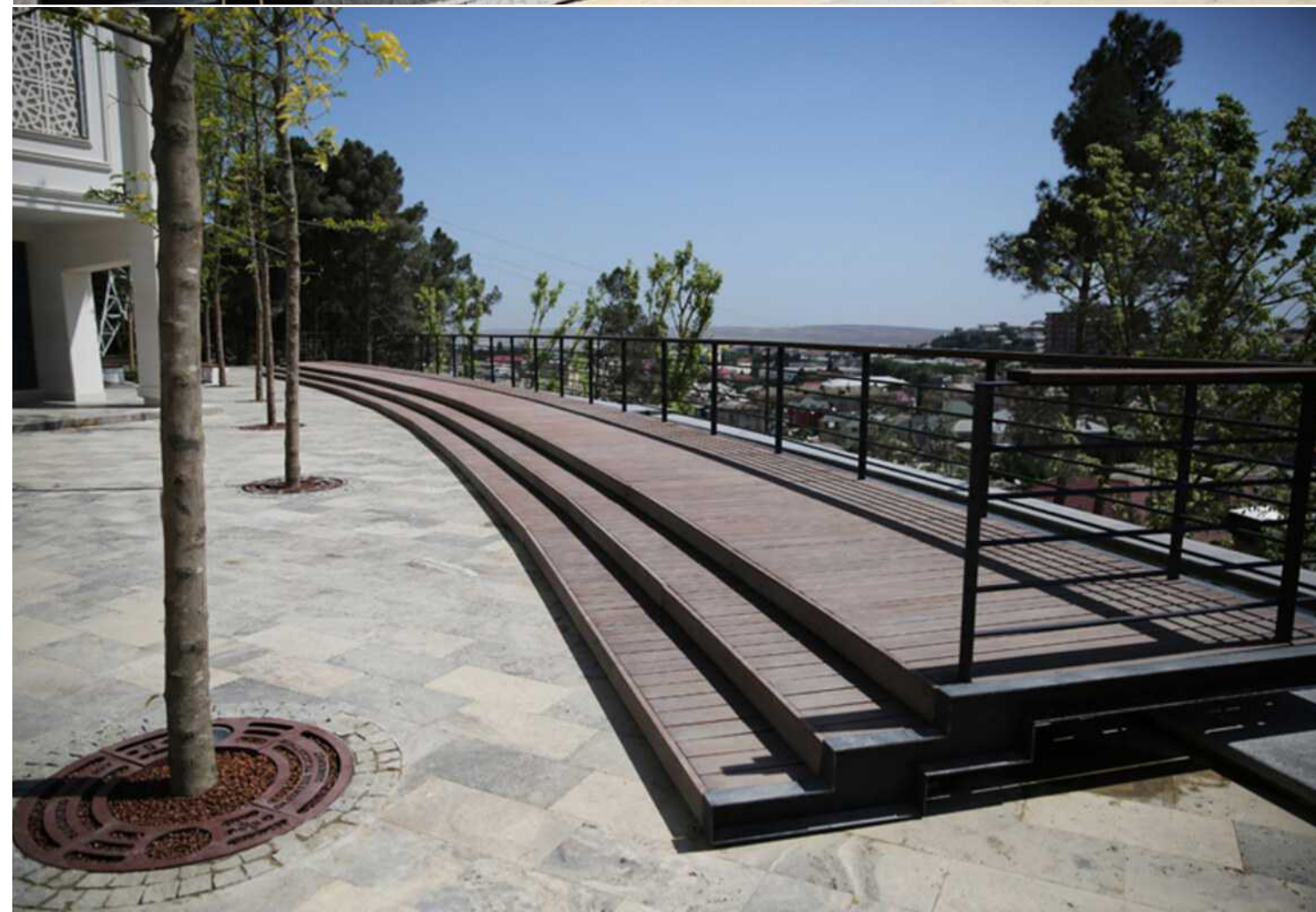
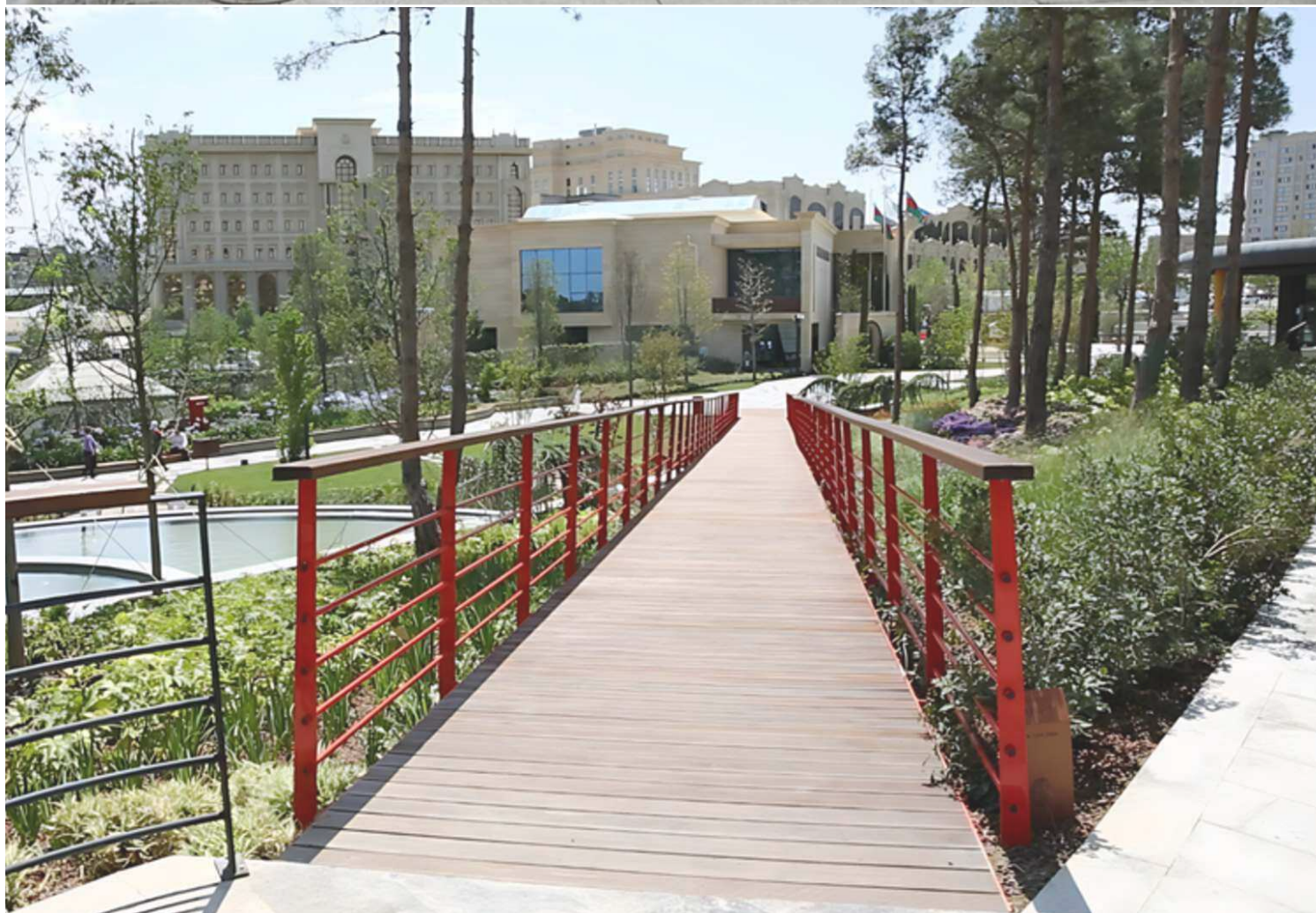
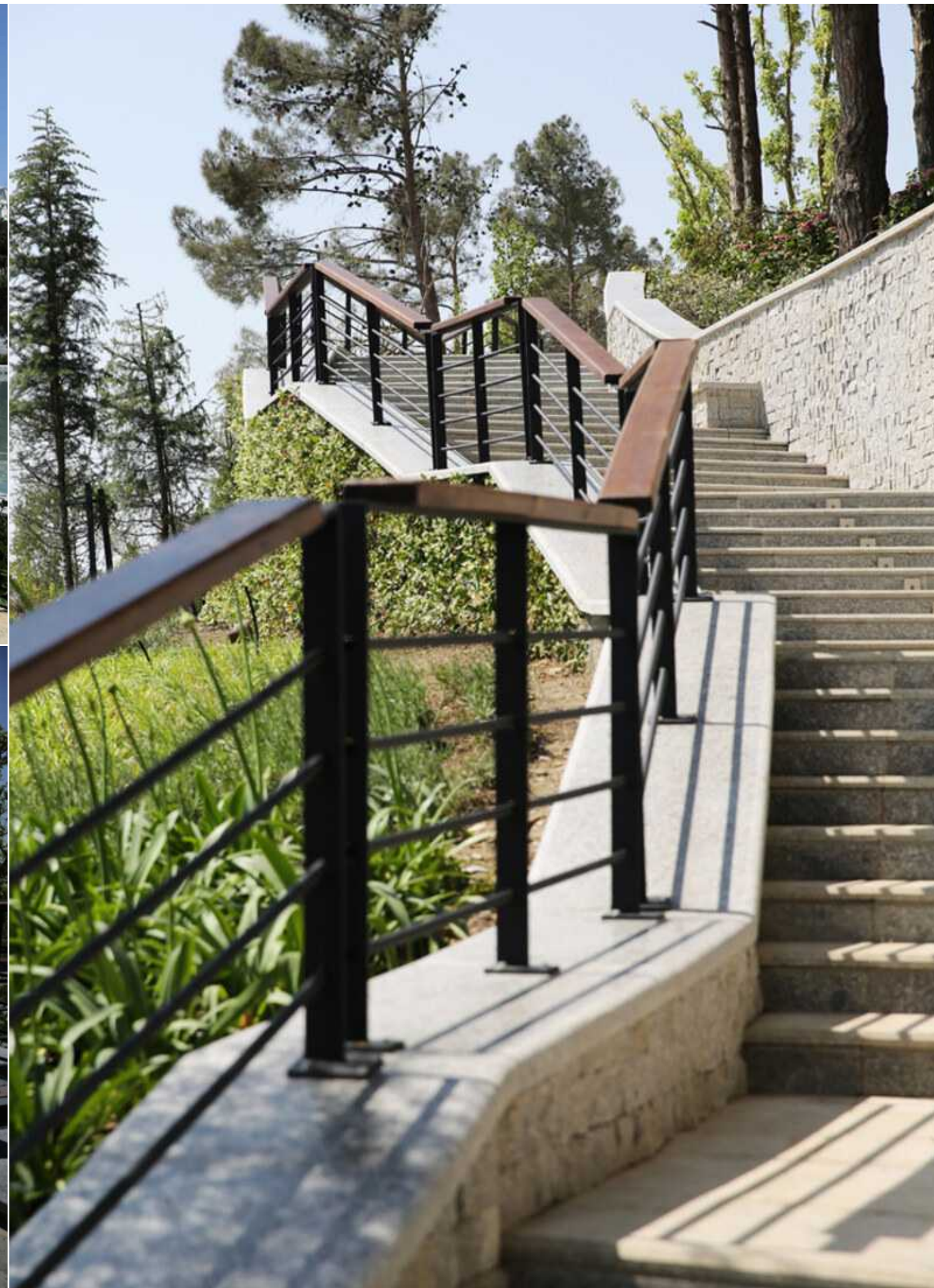
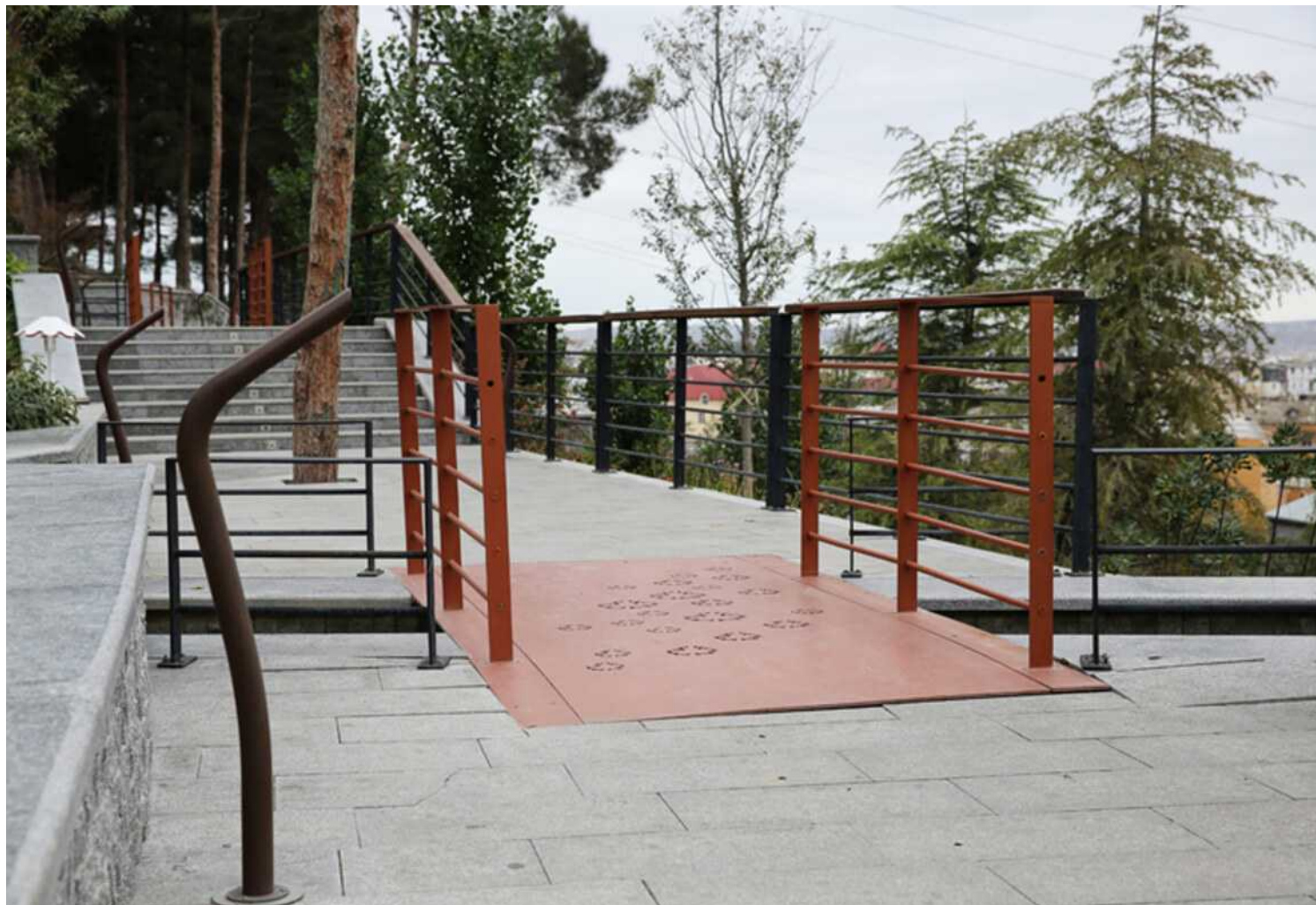




Red Bridge (Heydar Aliyev Park) 2013

The “Red Bridge” at Heydar Aliyev Park in Baku is an **architectural metal pedestrian platform** spanning **90 meters**, featuring **five viewing balconies** that offer visitors unique perspectives of the surrounding nature. Its curved design is both an aesthetic and **ecological solution**, gracefully navigating around existing trees to **preserve the park’s natural environment**. The bridge’s structure — a combination of **galvanized metal** and laminated timber — ensures both durability and visual appeal, with **24 columns at varying levels** providing structural stability. Meticulously crafted using high-quality materials, the platform integrates seamlessly with the park’s sloped terrain. All **metal connections** are **custom-made**, contributing to the project’s precision and clean execution. Despite logistical challenges, such as limited access to construction equipment, IDEA’s team completed the project **in just 30 days** — a clear demonstration of precision and efficiency. The Red Bridge stands as a testament to innovative design, blending functional infrastructure with the organic beauty of its surroundings.







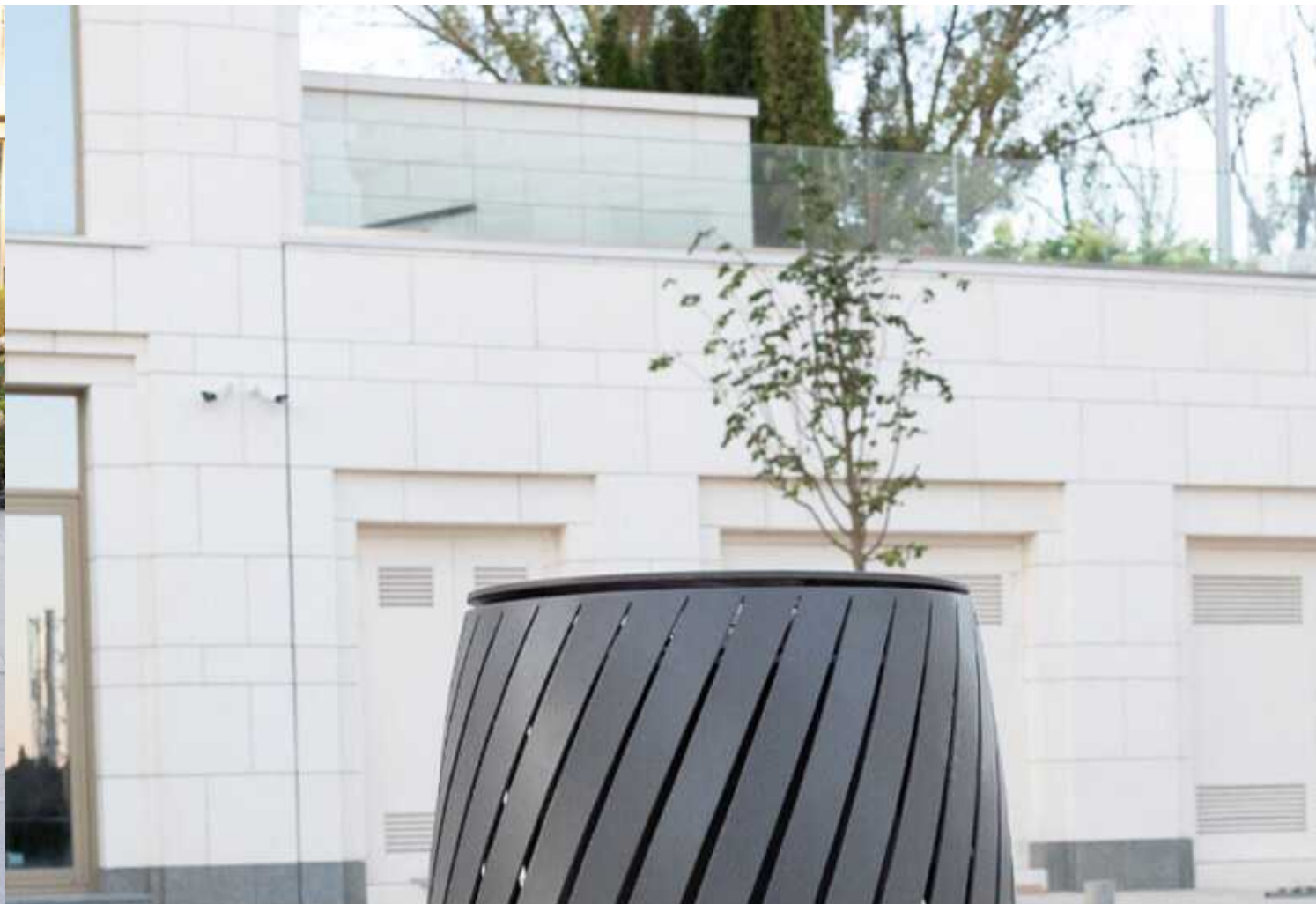
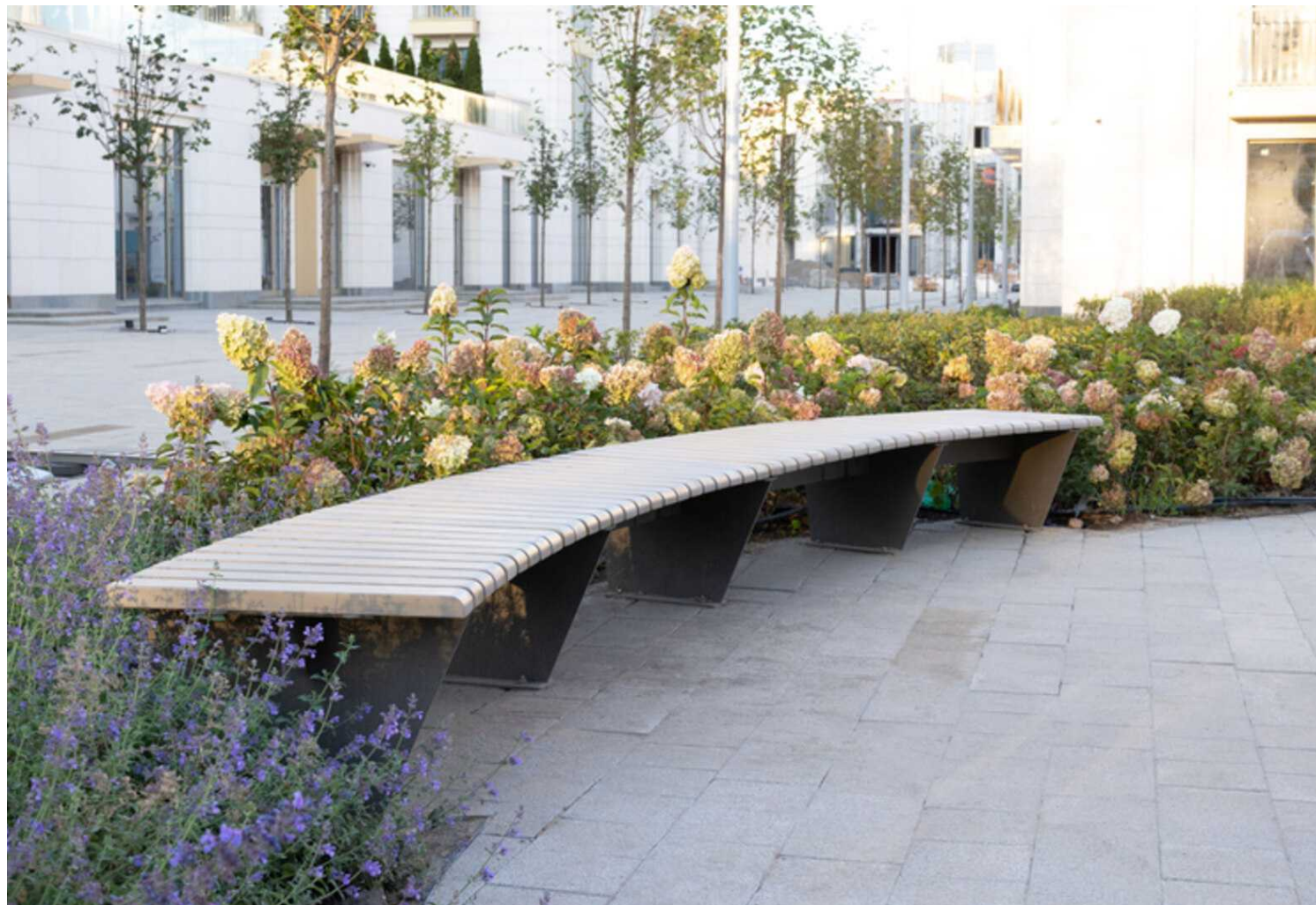
SENSATA DOSTYQ 300



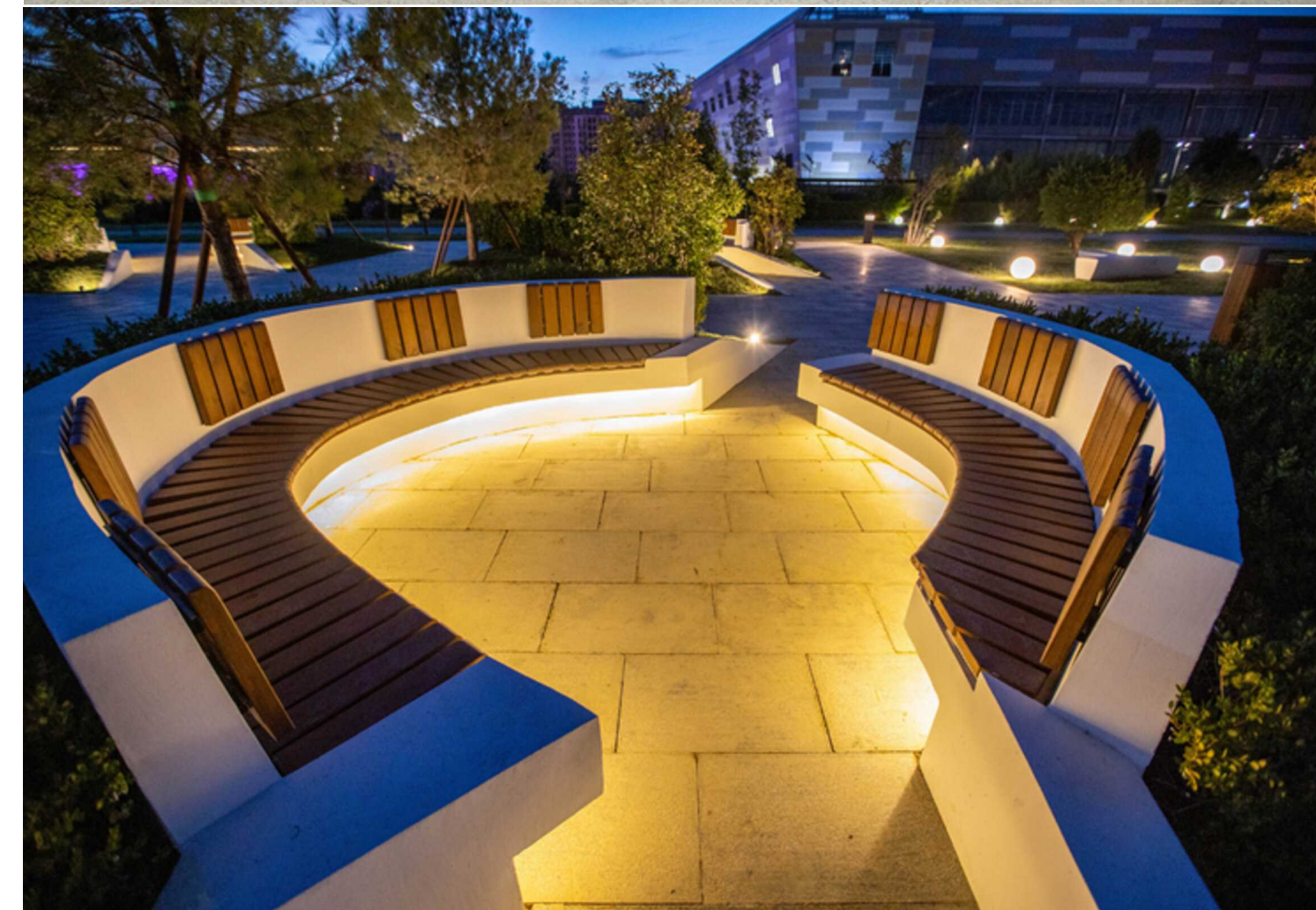
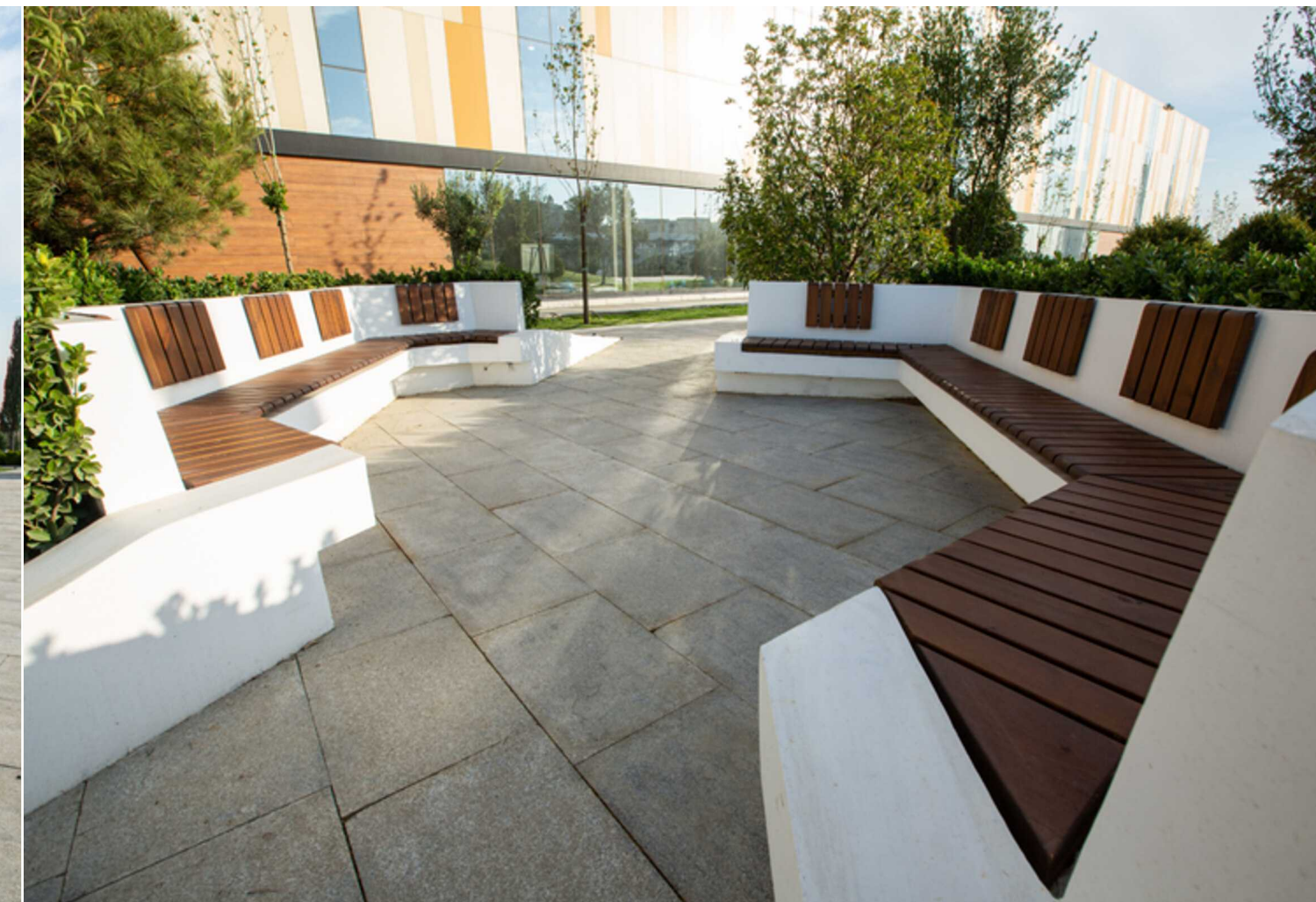
Dostyq 300 Residence for Sensata Group

The Dostyq 300 project in Almaty, developed for Sensata Group, required a wide range of outdoor elements — including **custom benches, pergolas, tree grilles, litter bins, and intercom stands**. All products were fully fabricated in-house and designed with a **bolted-joint system**, ensuring simple export, transport, and on-site assembly. Each piece combines **premium quality** and modern design: luxury pergolas were manufactured with **glue-laminated** and **impregnated wood**, while custom benches provide comfort and durability. Tree grilles enhance landscaping, and all metal components are fully **galvanized and powder-coated** for long-term resistance. This project demonstrates how **architectural metalwork** and **urban furniture** can deliver efficient, export-ready solutions for luxury residential landscapes.





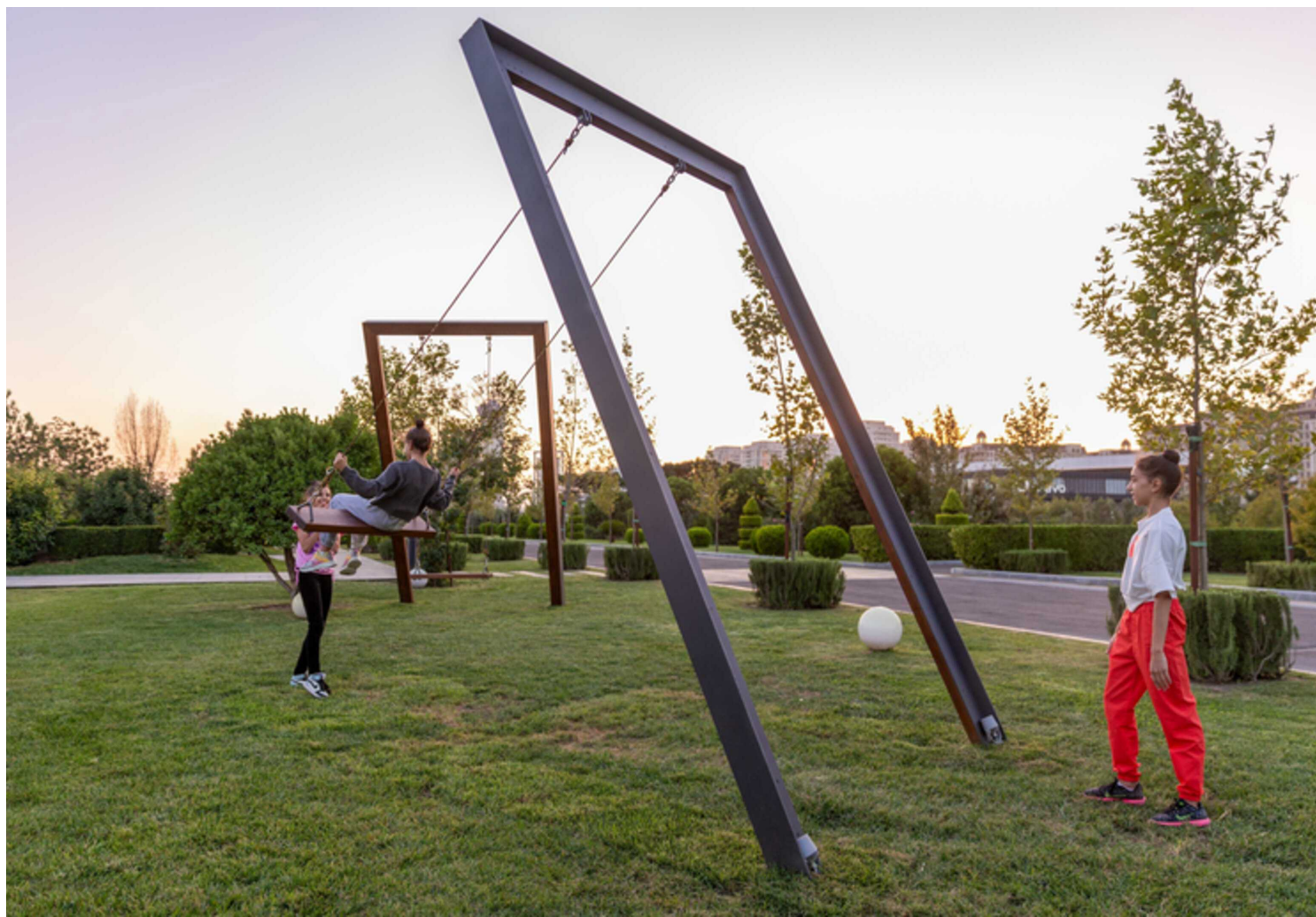
NATIONAL GYMNASTICS ARENA





National Gymnastics Arena 2021

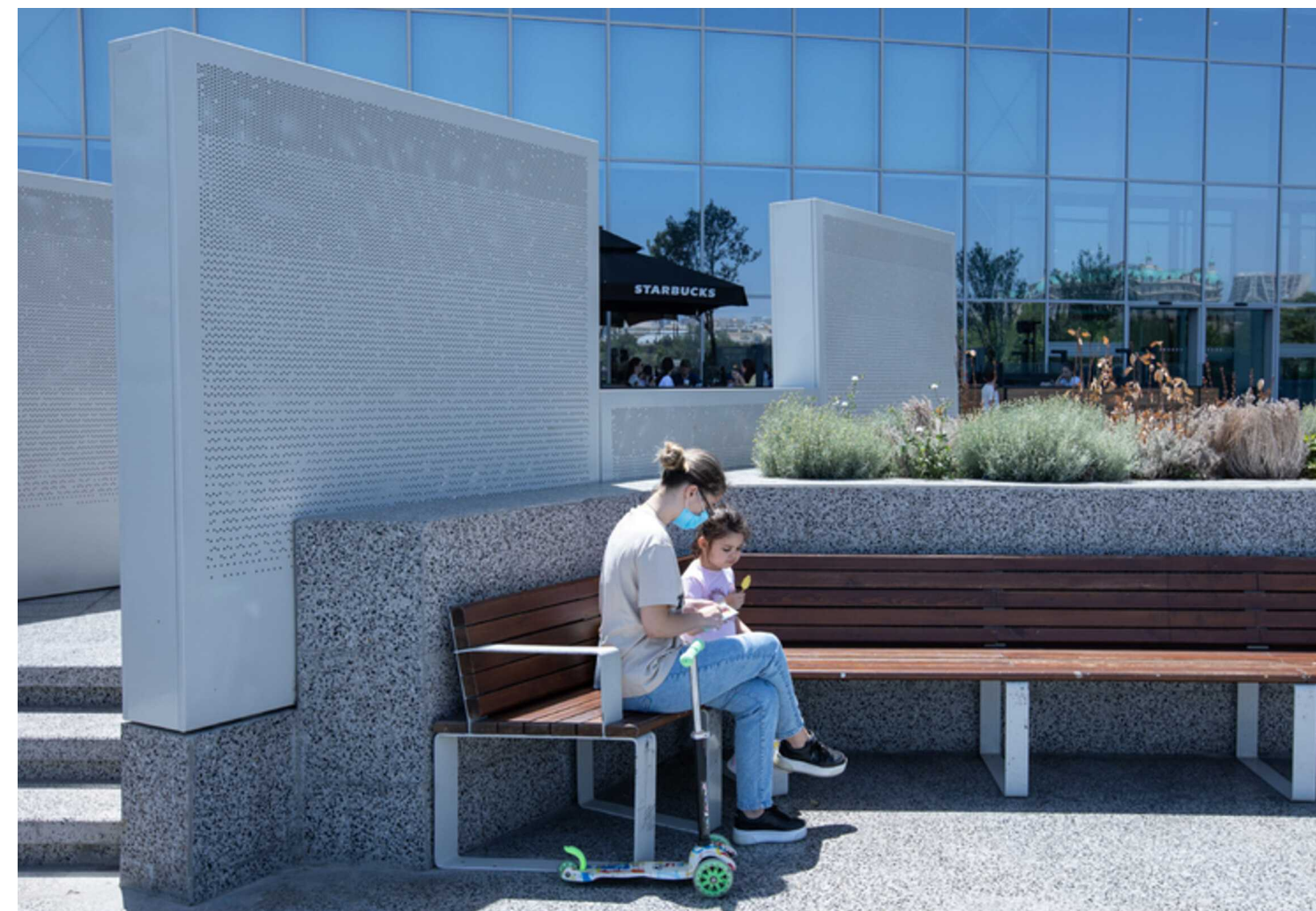
Located near Koroglu Metro Station on Heydar Aliyev Highway, the National Gymnastics Arena is a 9,000-seat venue that features several innovative design elements by IDEA. One of the standout additions is the “**Angle Swings**” — minimalist, tilted swings designed to visually activate open areas while inviting interaction. These pieces enhance both the aesthetic and functional qualities of the arena’s exterior space. Other contributions include **customizable benches**, **wooden** and **metal facades**, tree grilles, and decorative elements such as flagpoles, cabanas, hammocks, and planters. All facades were designed with modularity in mind — durable, demountable, and easy to replace. In the arena’s backyard, visitors can enjoy thoughtfully designed leisure zones, including the “Garden Cabana” for picnics, the iconic “Toros” swing, and a selection of benches like “Nuvolo” and “Viva,” creating a vibrant atmosphere for both relaxation and recreation.





Deniz Mall 2020

For **Deniz Mall**, IDEA delivered both **outdoor** and **indoor solutions** that elevate functionality and visual harmony. The exterior features “Line” benches, “Side” litter bins, “Silver” bike racks, and “**Wind Breakers**” — all designed with integrated lighting to enhance ambiance and usability. Indoors, “Bravo Flat” stainless steel litter bins complement the mall’s contemporary interior design. All wooden elements are **impregnated, glue-laminated**, and coated with water-based paint for long-term durability. Metal components are fully **galvanized** and **powder-coated**, ensuring resistance to weather and wear. These thoughtfully engineered products create a cohesive, practical, and stylish environment that reflects the high standards of one of Baku’s premier retail destinations.





Boulevard & Villas DTX 2021

The Boulevard & Villas DTX project combines elegant design with functionality for the State Security Service's Sanatorium. Among the key elements are our **“La Defense”** pergolas with **integrated lighting**, along with a large **custom pergola** for the restaurant area — both contributing to a sophisticated and shaded environment. The outdoor space is further enhanced with stylish, functional furniture including **“Toni”** and **“Sunny” chaise lounges**, **“Millennium” litter bins**, free-standing showers, changing cabins, and planters. Custom picnic tables offer a communal setting for leisure and dining. Designed to meet world-class standards, the project creates a well-balanced atmosphere that prioritizes comfort, durability, and refined aesthetics.



COLLEZIONE COLLECTION

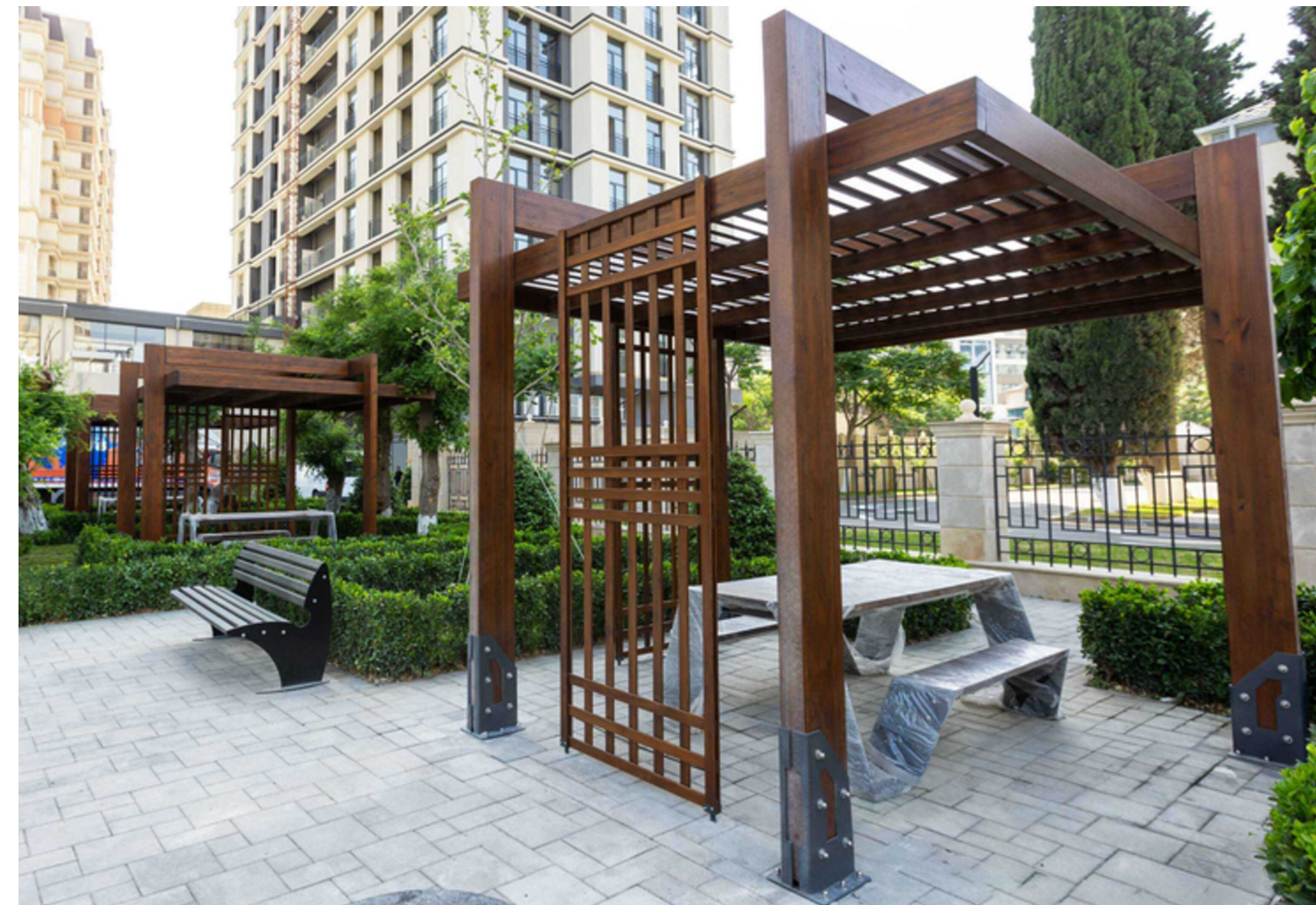


With the color of Termowood, the “Collezione Spirit” will become an indispensable relaxation space for your exterior.

The wood is impregnated to gain resistance against insects, termites, and decay. In addition, it is painted with a water-based paint that has water-repellent properties, is resistant to ultraviolet sun rays, and holds the “EN 71-3 Safety for Toys” certificate, ensuring it remains healthy for many years without bubbling or cracking. Therefore, the pergola can be easily installed around pools or other water bodies.





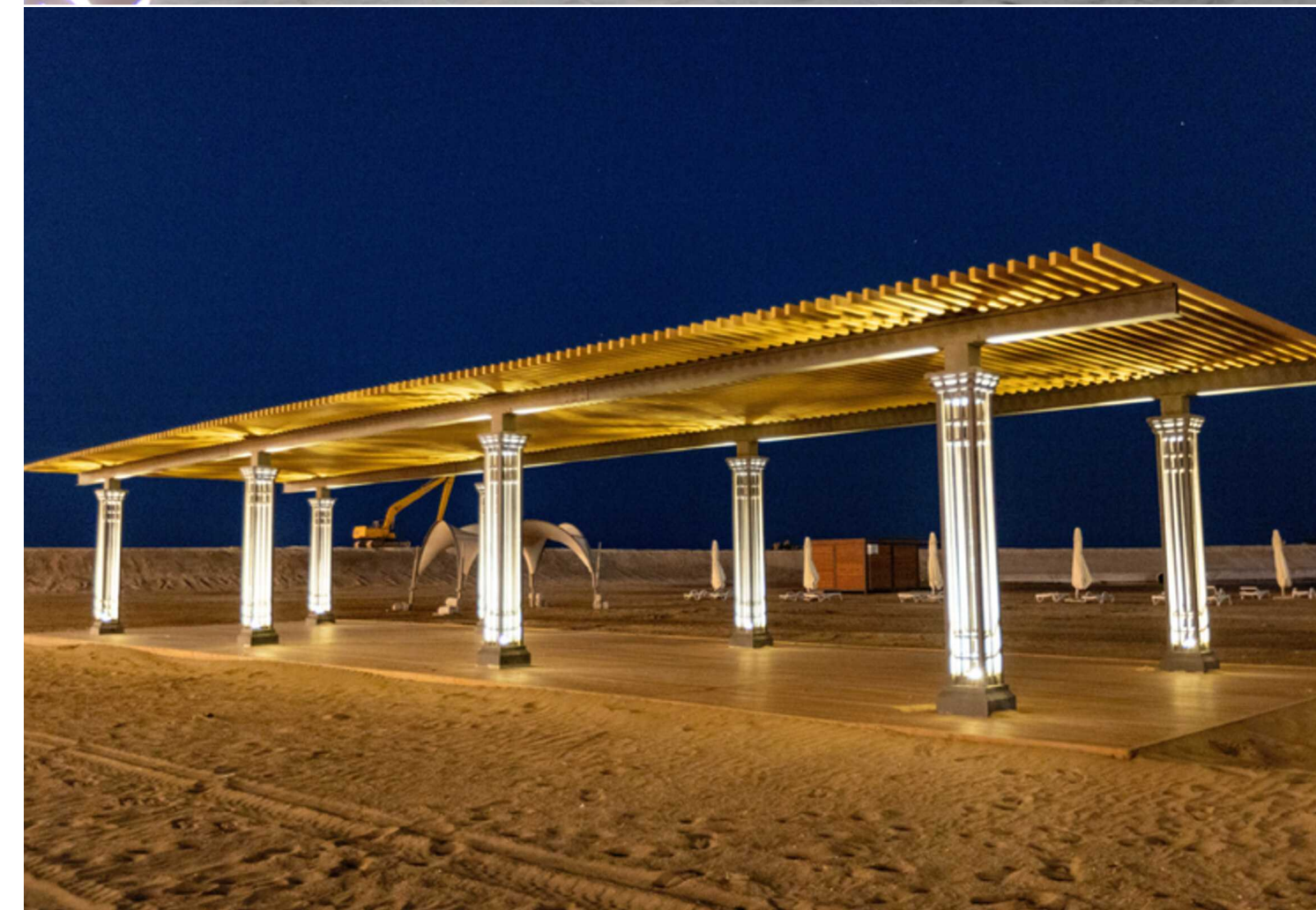
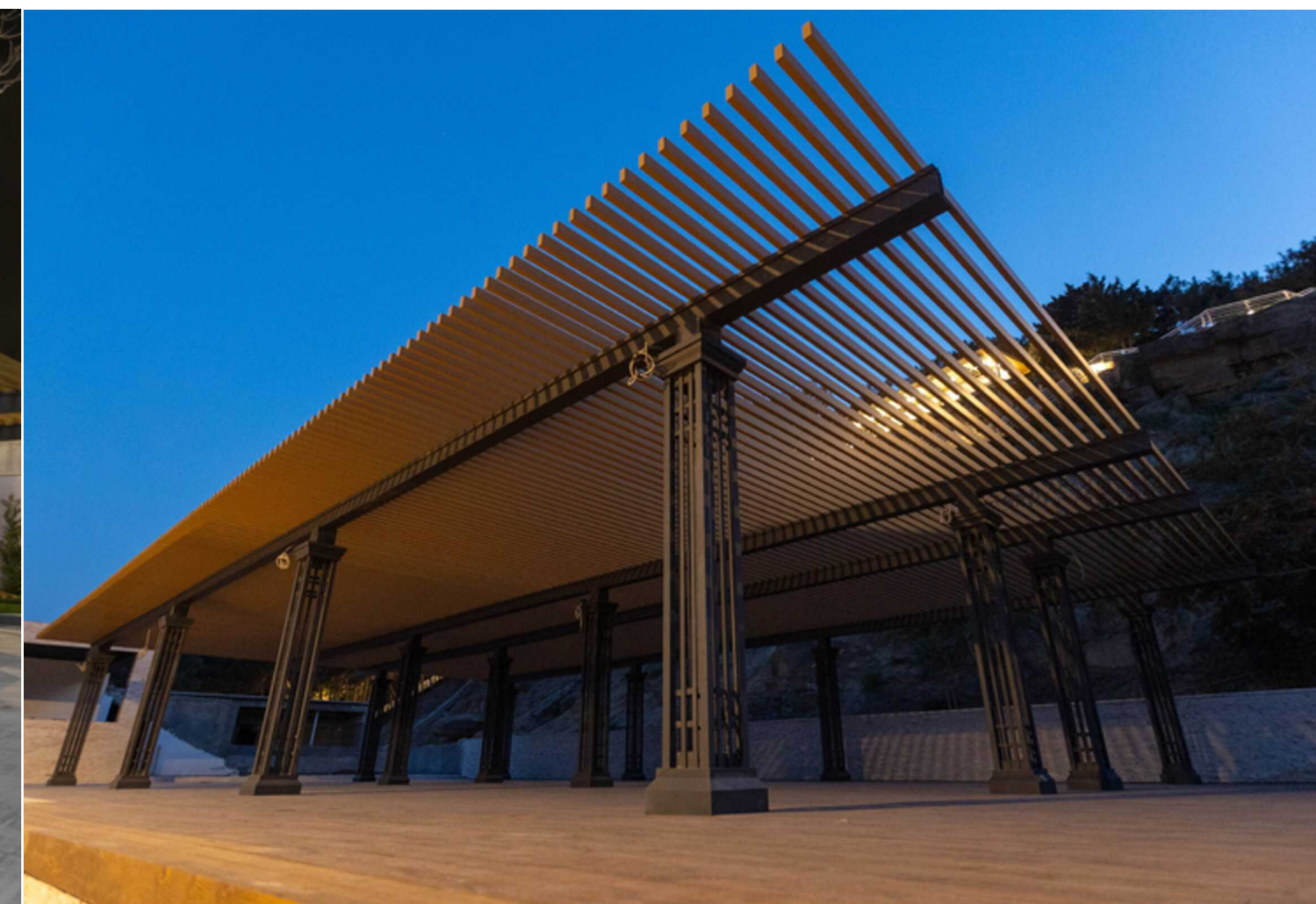
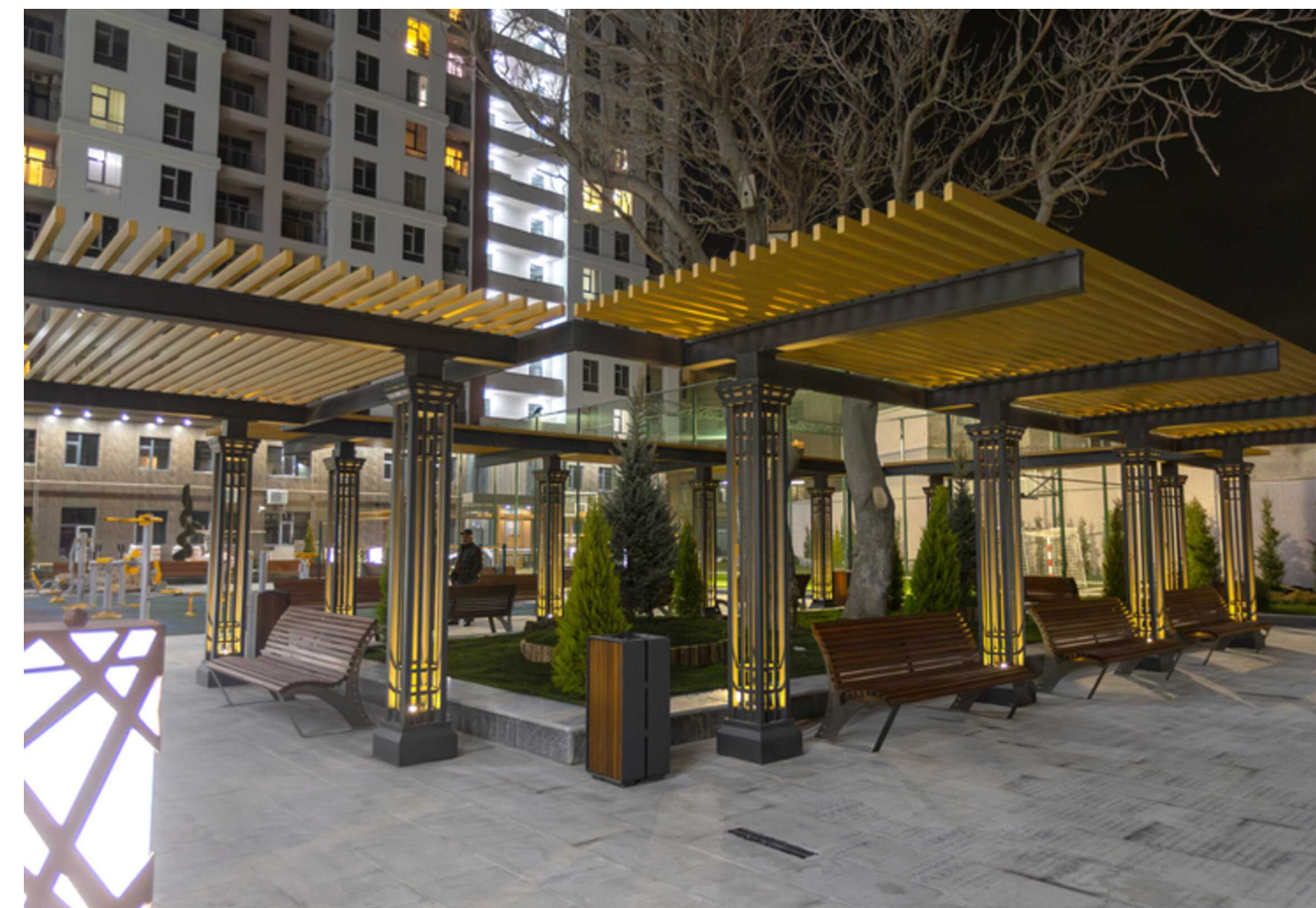


CUSTOMIZED STRUCTURES



WHITE CITY







Silkway Carport is a custom-made car shelter that provides sufficient coverage on both rainy and sunny days.

The extraordinary design and construction of the product are developed by the IDEA team. The special "Serge Ferrari" tent and asymmetric beams are the unique parts of the shelter which make it durable against harsh conditions.





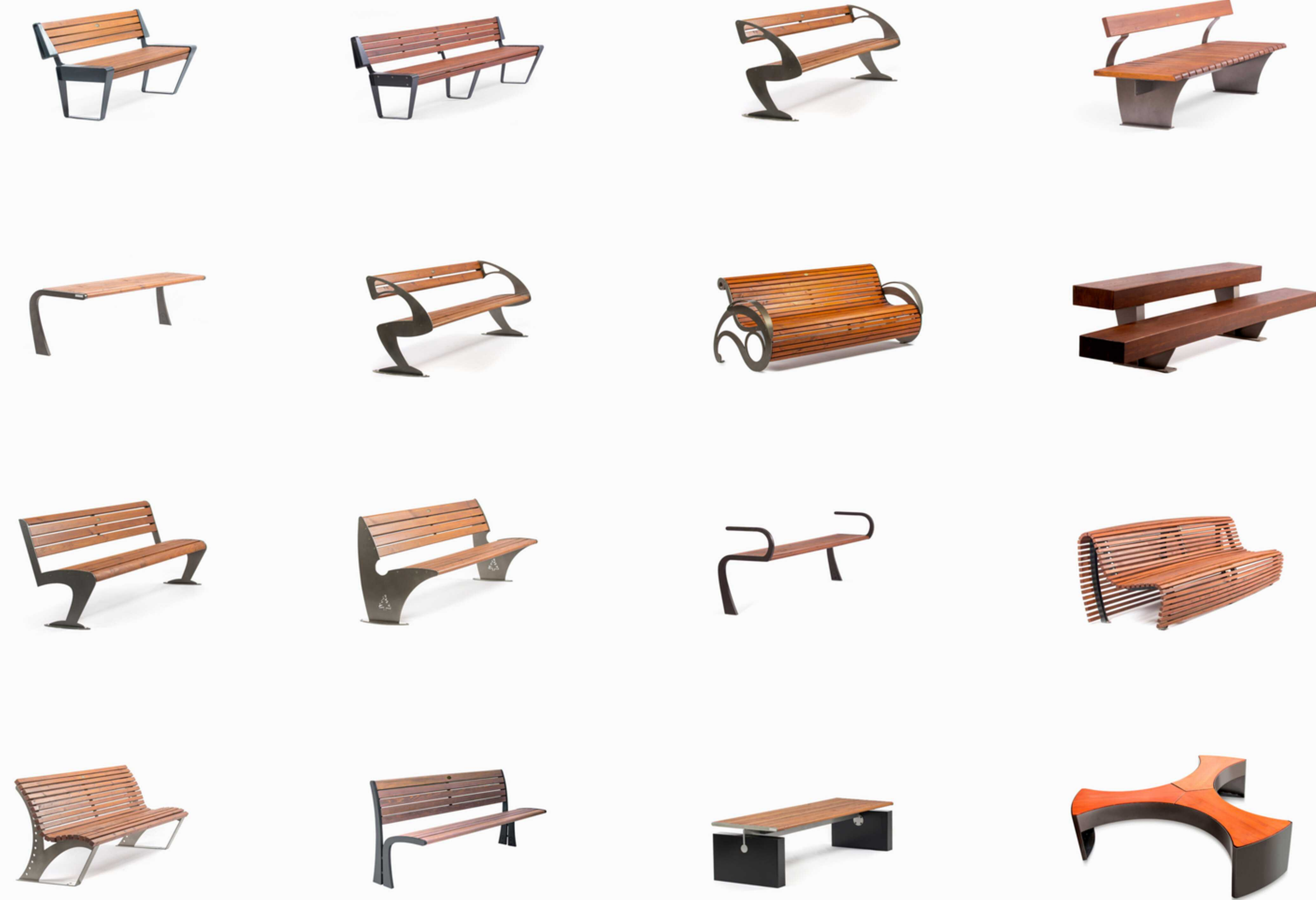
Looking for a durable car shelter solution for your villa?

Our carport pergola is designed to combine style and functionality, providing a long-lasting and visually appealing shelter for your vehicle. With its sturdy construction and elegant design, our carport pergola will enhance the aesthetics of your villa while ensuring your car is protected from the elements.





BENCHES
Heydar Aliyev Park Shamkir



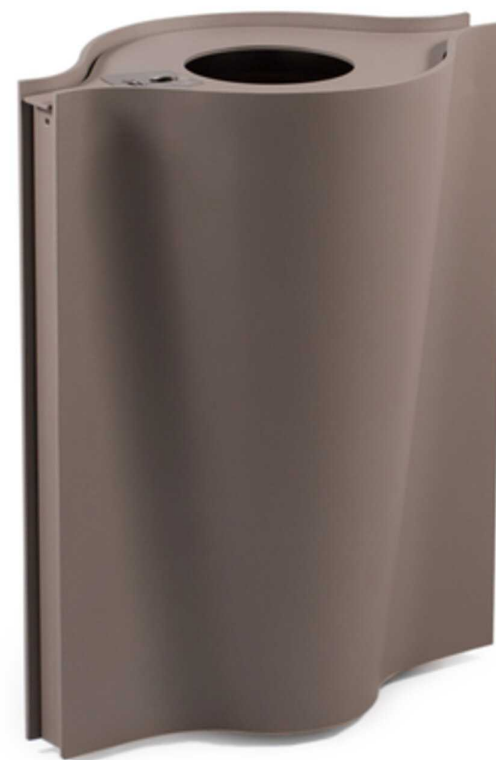
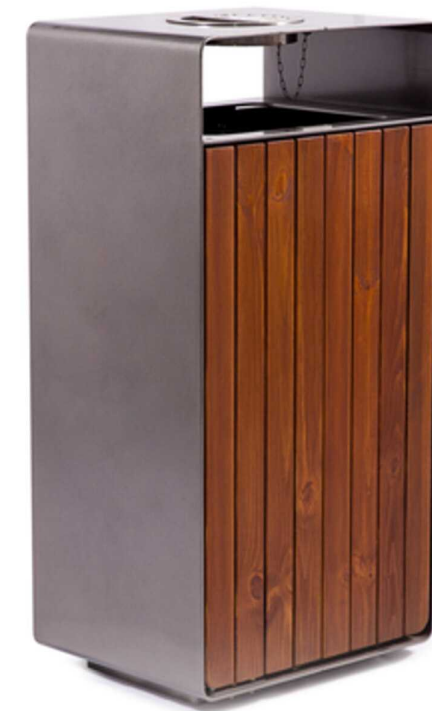




LITTER BINS
Zafar park project









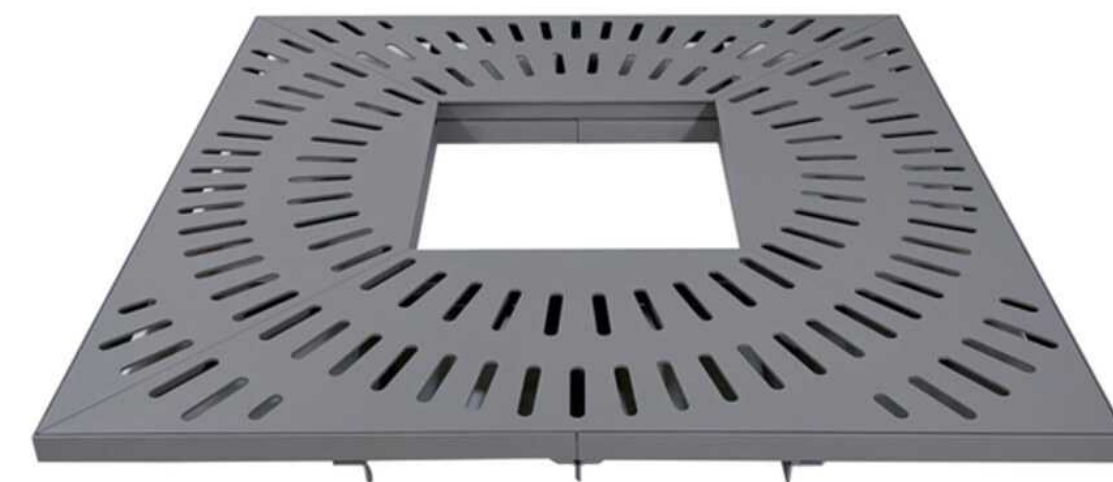
PLANTERS

Courtyard by Marriott Project





TREE GRILLES
Baku Zoo Park





VERSATILE IMAGINATIONS
Since 2003



ISO 9001:2008

@IDEABAKU



48 ABDULRAHIM BEY HAGVERDIYEV STREET, BAKU, AZERBAIJAN AZ1141

+994 12 310 40 10 +994 50 250 80 00 IDEA@IDEA.AZ

WWW.IDEA.AZ

